

User Guidelines

**User Guidelines for Hutan
Harapan Monitoring
Dashboard**

March 2026

Contents

Introduction	5
Getting Started	5
Prerequisites.....	Error! Bookmark not defined.
Accessing the Dashboard	5
Logging In	6
Your First View – Dashboard Overview.....	6
Dashboard Components Overview :.....	7
Dashboard Overview.....	8
Main Navigation Menu	8
Main Menu Items in Side Bar.....	8
Main Menu Items in Top Navigation Bar	8
Navigation and Interface	9
Understanding the Sidebar	9
Map Interaction Basics	10
Working with Maps	11
Understanding Map Layers	11
Available Layer Types	11
Toggling layers	11
Map Toolbar	14
Available Tools.....	14
Area Search and Selection	16
Searching for Location.....	16
Search Methods.....	16
Using Search Results.....	18
Forest Protection Monitoring	19
Tree Cover Loss Alerts	19
Accessing Tree Cover Loss Alerts	19
Filtering Tree Cover Loss Alerts:.....	20
Viewing Tree Cover Loss Alert Details.....	20
Generating Reports	21
Fire Alerts	22
Accessing Fire Alerts	22
Filtering Fire Alerts:	23

Viewing Fire Alert Details	23
SMART Patrol	24
Accessing SMART Patrol	24
Filtering SMART Patrol	24
Viewing SMART Patrol.....	Error! Bookmark not defined.
Accessing Action	25
Filtering Action	25
Viewing Action.....	26
Accessing Patrol Distance	26
Filtering Patrol Distance	27
Viewing Patrol Distance.....	27
Historical Land Cover	29
Accessing Historical Land Cover.....	29
Viewing Historical Land Cover	Error! Bookmark not defined.
Biodiversity.....	29
Accessing Biodiversity.....	30
Filtering Biodiversity.....	30
Viewing Biodiversity	31
Climate	32
Climate Data Types and Parameters.....	32
Accessing Climate Forecast Data	32
Filtering Climate Forecast Data.....	33
Accessing Climate History Data.....	33
Filtering Climate History Data	34
Satellite Imagery.....	35
Available Satellite Sources.....	35
Viewing Satellite Imagery	35
Advanced Viewing Satellite Imagery	38
Troubleshooting.....	40
Common Issues and Solutions.....	40
Issue 1: Map Not Loading	40
Issue 2: Data Not Updating.....	41
Issues 3: Report Generation Fails.....	41
Issue 4: Slow Performance	42

Glossary	42
Appendices.....	42
Appendix A: Supported Browsers	42
Appendix B: System Requirements	43
Appendix C: Data Update Schedule.....	43

User Guidelines for Hutan Harapan Monitoring Dashboard V2

Introduction

The Hutan Harapan Dashboard is a web-based platform for monitoring, analyzing, and managing critical forest and environmental data. This platform enables users to:

1. Visualize forest conditions, alerts, and environmental data on interactive maps
2. Analyze specific areas using custom selection tools
3. Track trends in climate, biodiversity
4. Monitor alerts for fires, deforestation.
5. Generate professional reports for analysis and sharing
6. Manage forest protection activities and patrols
7. Supported by high resolution satellite image basemap

This guide is designed for any user responsible for monitoring concession data, managing conservation programs, or making strategic decisions based on the information provided, it provides comprehensive instructions to help all related users maximize the dashboard's potential. By the end of this guide, you will be able to confidently navigate the dashboard, monitor alerts and field data, analyze climate, and biodiversity trends, and generate and download reports.

Getting Started

Prerequisites

To ensure a seamless experience with the Hutan Harapan Monitoring Dashboard, please verify the following prerequisites are met. Ensure you have a valid user account, the dashboard is optimized for wide screen and modern web browser, we recommend using the latest version of Google Chrome, Mozilla Firefox, Microsoft Edge, or Safari for full functionality, and ensure you have a stable internet connection and sufficient bandwidth for map interaction.

Accessing the Dashboard

1. Open web browser such as Chrome, Safari, Edge or Firefox and input the following URL address (<https://forestmonitoring.hutanharapan.id/v2>) to navigate to the Hutan Harapan Monitoring Dashboard.
2. The login page for authentication has automatically appeared.

Logging In

Login Steps:

1. Enter your email address in the email field or username.
2. Enter your password in the password field.
3. Click “Login”.

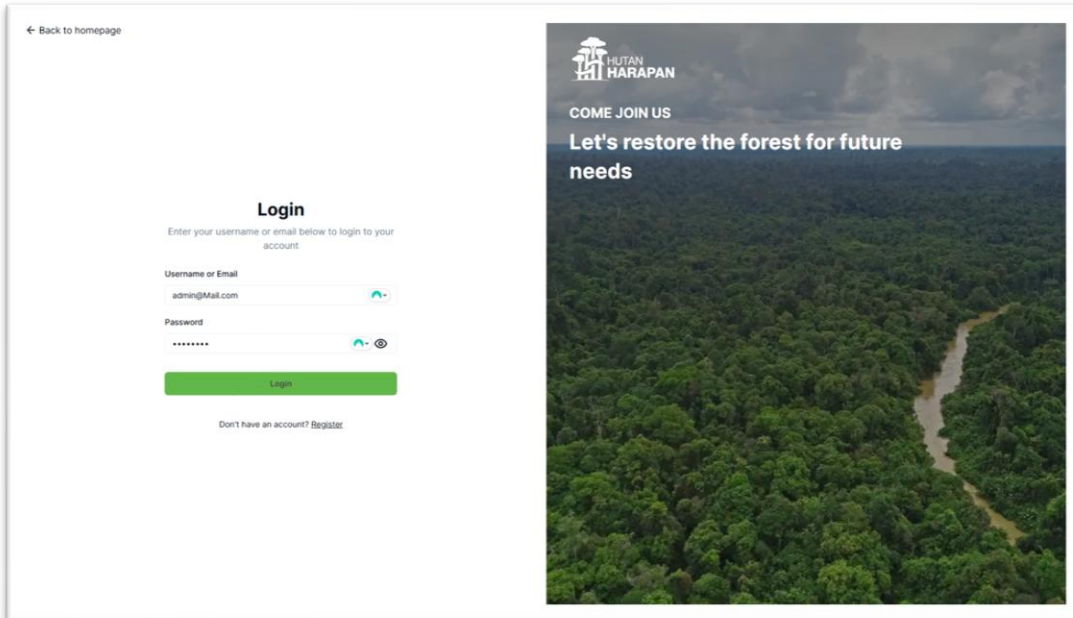


Figure 1. Login screen on Hutannya Harapan monitoring dashboard.

The Landing page – Dashboard Overview

The landing page of monitoring dashboard will appear after successful login, you will be automatically redirected to main dashboard interface:

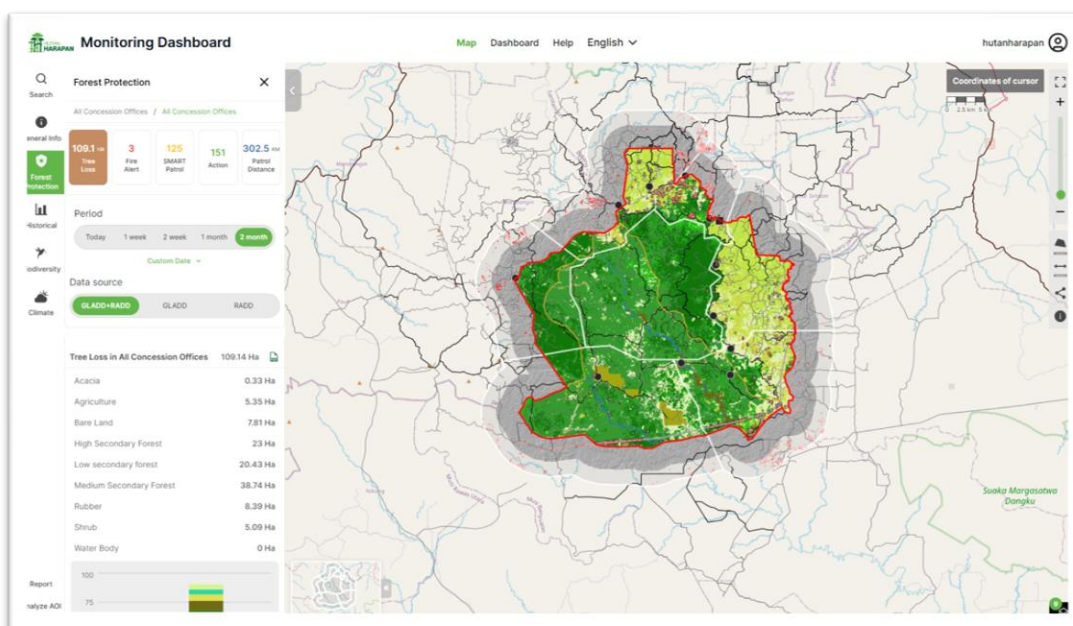


Figure 2. Landing page of monitoring dashboard.

Dashboard Components Overview

Key Components:

1. Navbar – Map menu, Dashboard menu, User profile, help, and language selector.
2. Sidebar - Main navigation menu.
3. Side Panel – Main panel for data analysis.
4. Map Area - Interactive map displaying data.
5. Tools Bar - Drawing, measuring, and selection tools.
6. Legend Panel - Layers controls and information.
7. Insight - The area of interest on the map.
8. Scale - Measurement scale on the map

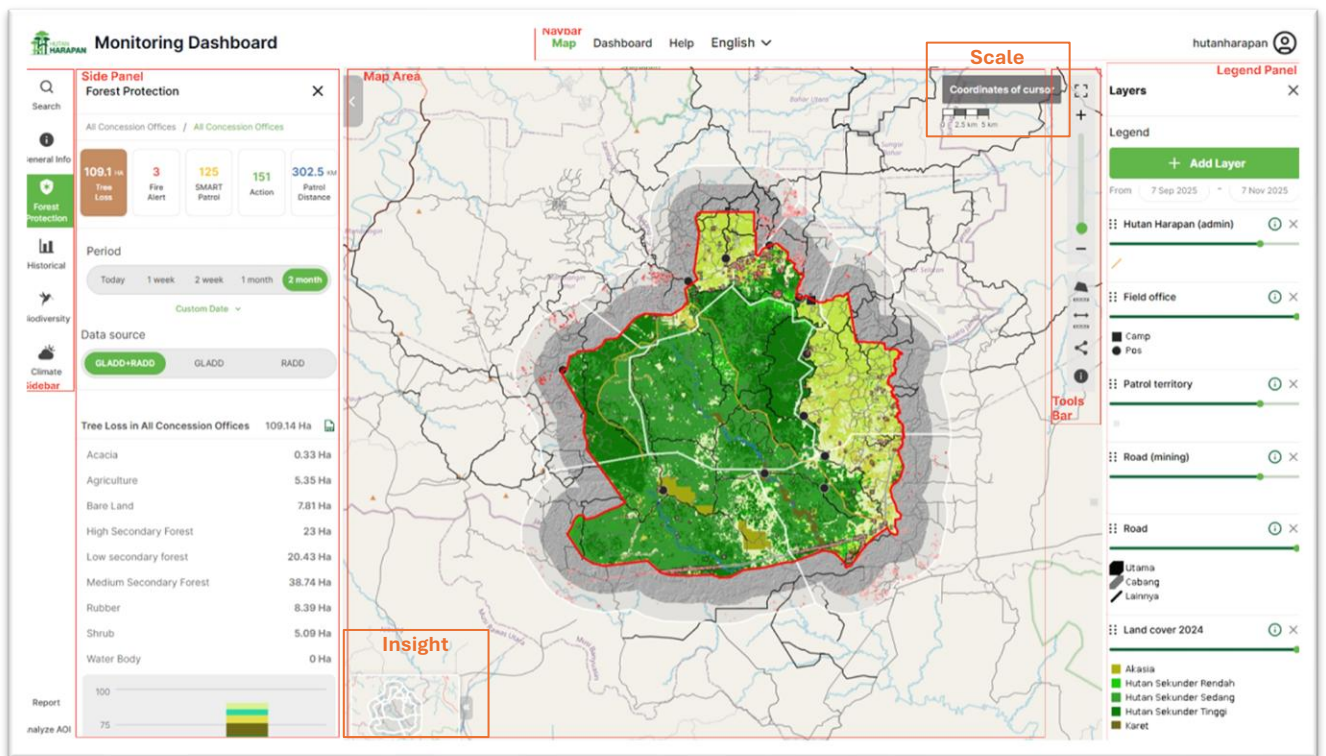


Figure 3. Monitoring dashboard components.

Quick Tip: You can collapse the sidebar by clicking the arrow icon to get more map viewing space.

Dashboard Overview

Main Navigation Menu

The sidebar menu is your primary navigation tool. Here's what each section offers:

Main Menu Items in Side Bar

1. Search – Find and select specific area or locations.
2. General Info – This menu provides overview of current land cover analysis.
3. Forest Protection – Monitor deforestation and fire alerts, and patrol activities.
4. Historical – Analyze historical land cover change and trends over time.
5. Biodiversity – Track species counts, location, and biodiversity data.
6. Climate – Access and analyze historical and forecast climate data, including temperature, rain, and fire risk.

Main Menu Items in Top Navigation Bar

The top navigation bar offers streamlined access to key functionalities and information:

- a. Map – The central interactive map, providing the primary interface for visualizing forest conditions, alerts, environmental data, and spatial analysis tools.
- b. Dashboard – The main dashboard, offering a summary of key metrics such as forest protection, biodiversity, and climate features, viewable for all or selected area.
- c. Help – Access to help documentation.
- d. Language Selector – Feature to allow users to switch the interface language between English and Indonesian.
- e. User Profile Icon – Provide access to settings (admin), and the option to logout.

Navigation and Interface

The Sidebar

The sidebar is collapsible and contains analysis data.

Sidebar Features:

- Click the arrow icon to expand/collapse.
- Click any feature to open its analysis panel.
- Active features are highlighted.
- Scroll to see all available analysis data in the panel.

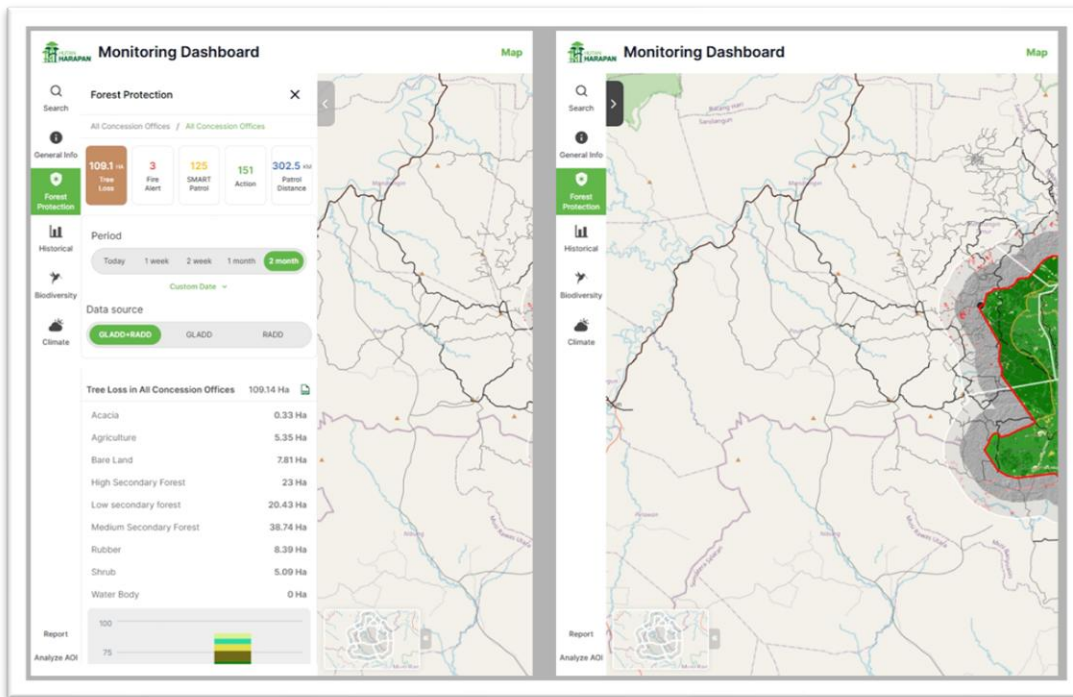


Figure 4. Navigation and menu on monitoring dashboard.

Map Interaction Basics

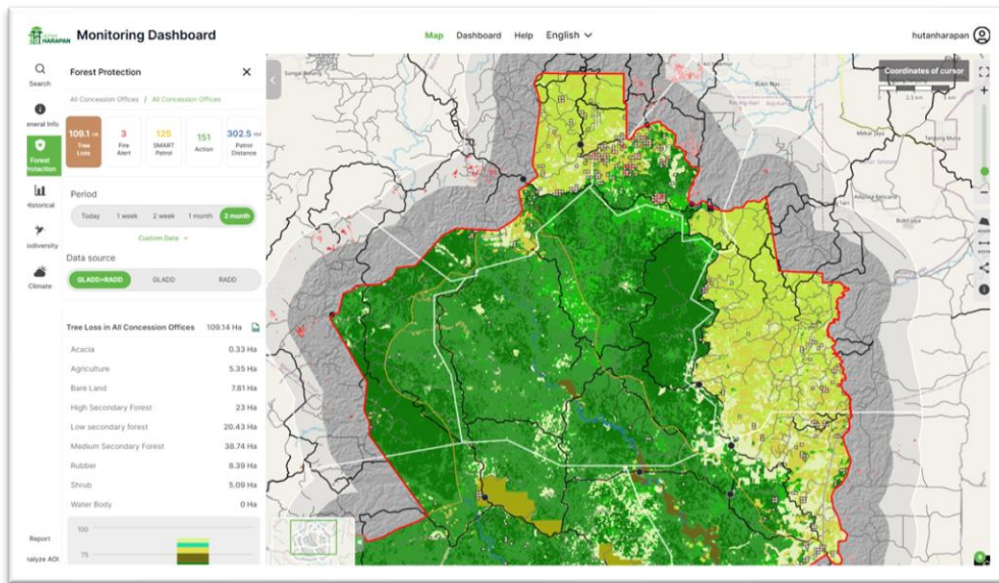
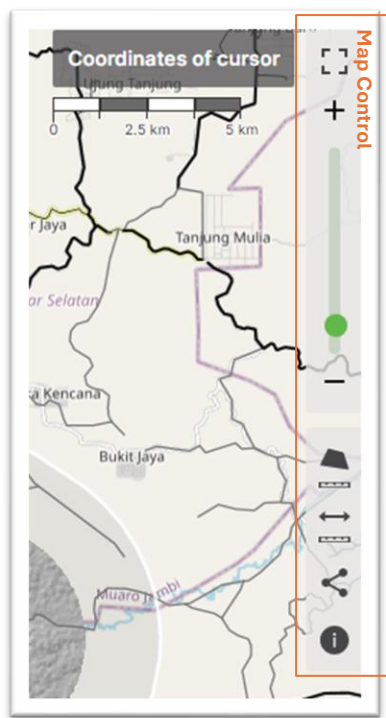


Figure 5. Map function on interactive monitoring dashboard.

The interactive map is the central feature of the dashboard, the map included with a basic map controls located on the right side of the screen.



Basic Map Controls:

1. Full Screen
Expand the map to full-screen mode for an immersive experience.
2. Zoom In/Out
Adjust the map's magnification using mouse wheel or by clicking the "+" and "-" buttons.
3. Polygon
Measure the polygon area by drawing the area of interest.
4. Line
Draw the line to measure the polygon area by drawing the area of interest.
5. Share
Generate a shareable link to the current map view.
6. Pan/Move
Navigate across the map by clicking and dragging to reposition the view.

Figure 6. Map control on monitoring dashboard.

Working with Maps

Map Layers

The map displays multiple data layers that you can toggle on and off.

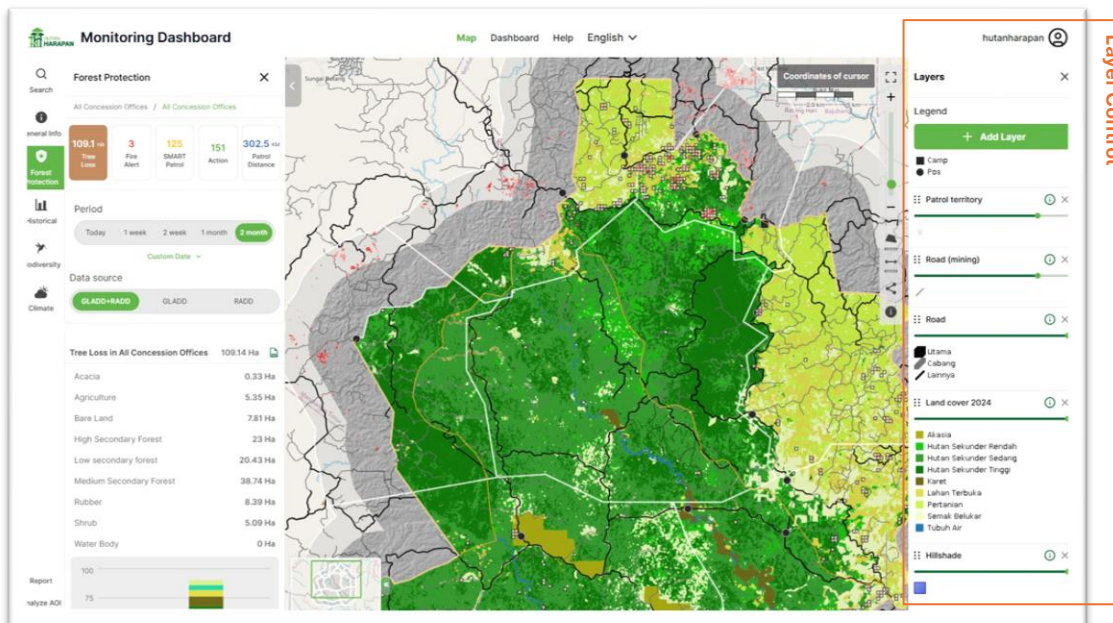


Figure 7. Layer control on monitoring dashboard.

Available Layer Types

1. Default Layers
 1. Concession Area
 2. Field office and Post
 3. Province boundaries
 4. Historical Land cover
 5. Road Network
 6. Rivers Network
 7. Hill shade (Terrain)
2. Data Layers
 1. Periodic fire and deforestation (daily)
 2. Administrative boundaries (Patrol territory / Working area)
 3. Field Monitoring (Patrol with SMART-Patrol)
 4. Biodiversity (wildlife finding)
 5. Climate (temperature, rain, humidity and wind direction)
3. Satellite Imagery
 1. Sentinel 2 (20m resolution daily)
 2. Landsat (30m resolution daily)
 3. Google Satellite Imagery (Airbus 10cm composite from 2010-todate)
 4. ESRI Imagery (2010)
 5. Copernicus Vegetation/Water/Built-Up Index (yearly NDVI, NDWI and NDBI)

4. Basemap

1. Sentinel 1 and 2 basemap (20m resolution composite 2025)
2. Landsat basemap (30m resolution composite 2025)
3. Esri Satellite and Basemap (10cm resolution 2010)
4. Google Hybrid basemap (10cm resolution composite 2010-todate)
5. Google Roadmap and Terrain basemap
6. Esri Roadmap basemap
7. CartoDB Positron and Dark Matter basemap.

Toggling layers

1. Open Layer Panel
 - a. Locate the Add Layer icon in the legend area.
 - b. Click “Add Layer”.

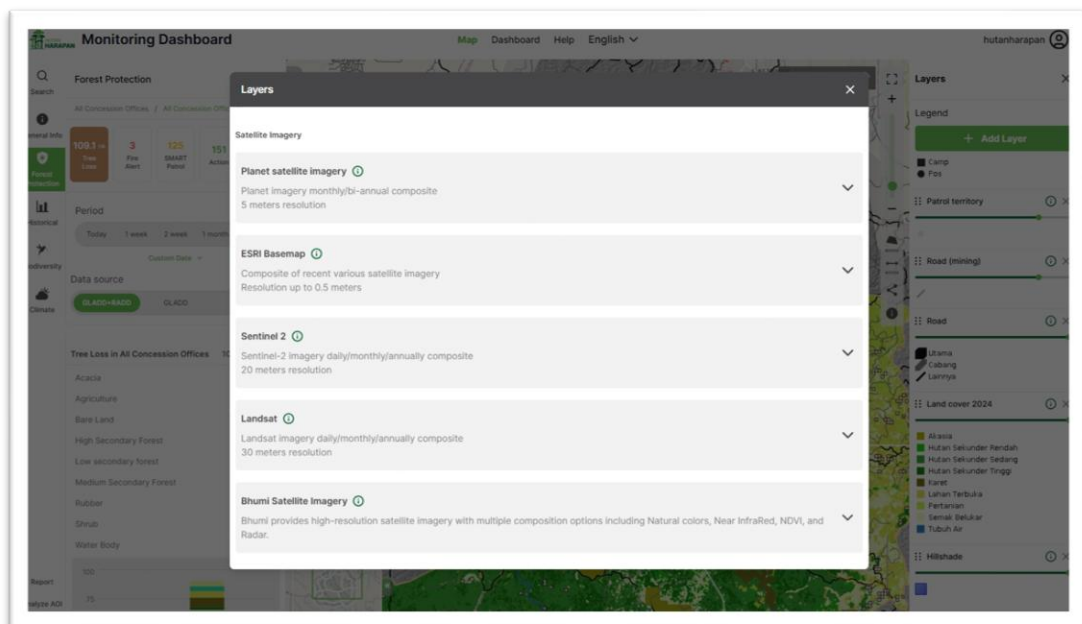


Figure 8. List of layers available on monitoring dashboard.

2. Toggle Layers

- a. Click radio button to show or hide layers.
- b. Click x or close the pop up.

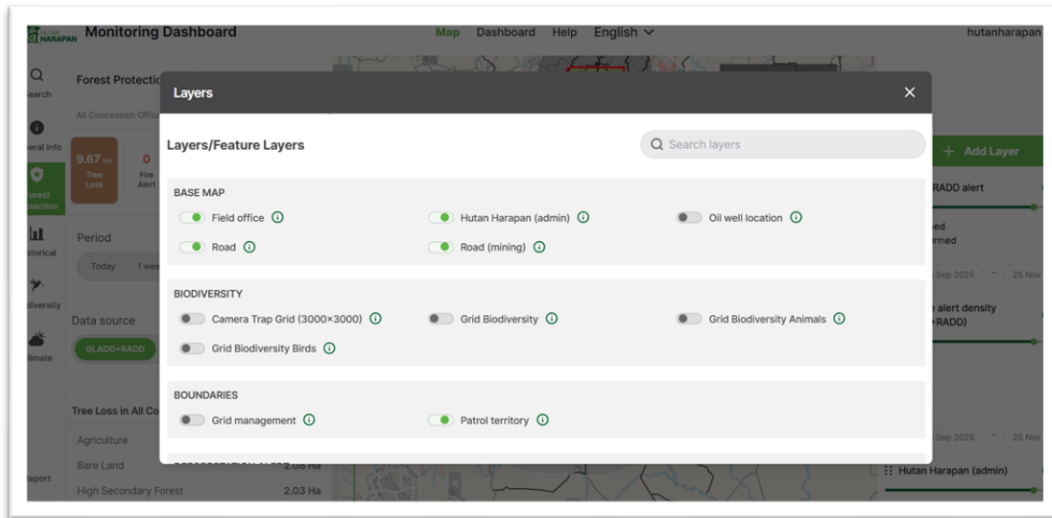


Figure 9. Layer control on monitoring dashboard.

3. Adjust Opacity

Use slider to adjust layers transparency.

Tip: You can stack multiple layers to see relationships between different data types.

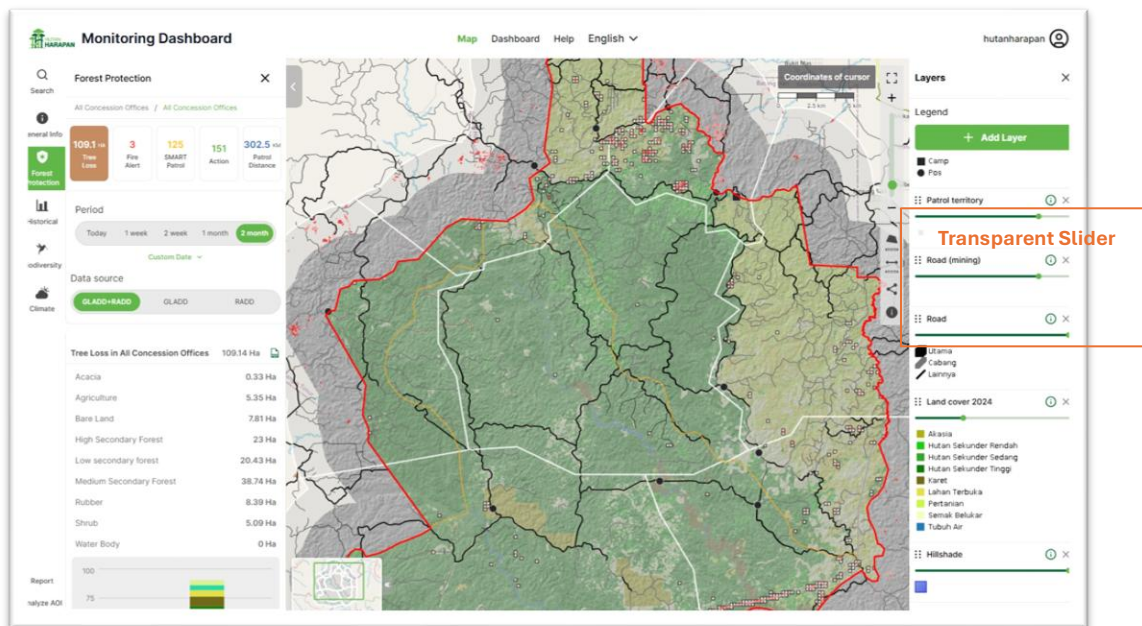



Figure 10. Layer control for transparent slider on monitoring dashboard.

Tip: You can stack multiple layers to see relationships between different data types.

Select basemap layers

1. Open Basemap Dialog

- Click the satellite icon in the below right corner. 
- Select on available basemap form Basemap Gallery and click “Switch”.

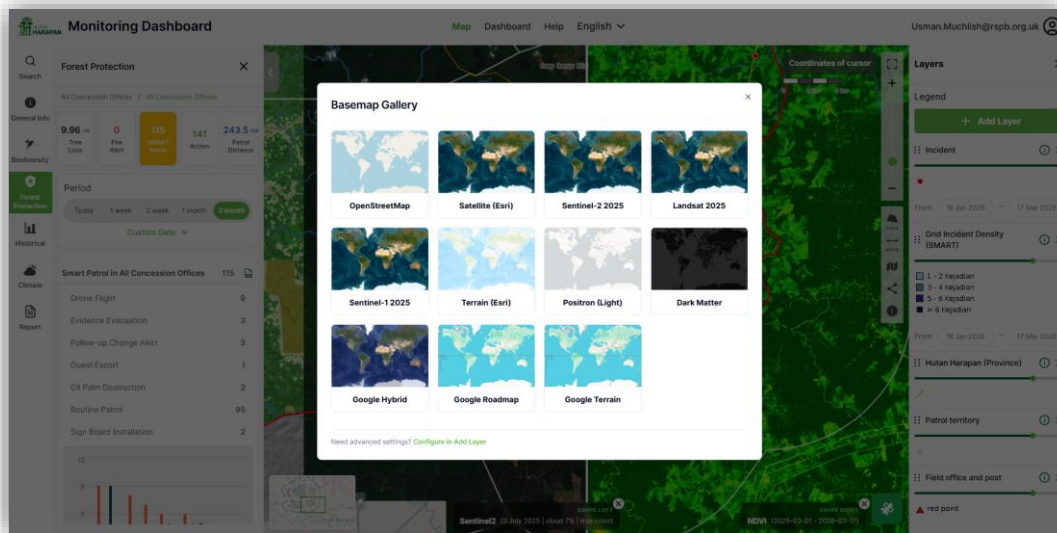


Figure 11. Basemap gallery on monitoring dashboard.

2. Toggle Basemap
 - Click the satellite icon in the below right corner.
 - Select on available basemap form Basemap Gallery and click “Switch”.
3. Remove basemap

Click on X sign on the bellow right conner to disable selected basemap.

Limitation: Basemap only works on top of another layer, to compare the other layer please disable basemap.

Map Toolbar

The map toolbar provides tools for analyzing specific areas.

Available Tools

1. Measure Area, this tool calculates area of drawn shapes
 - a. Click Measure Area icon to begin.
 - b. Click on the map to place the corners of your desired shape
 - c. Double clicks on the final point to complete the drawing. The total calculated area of the shape will be displayed.

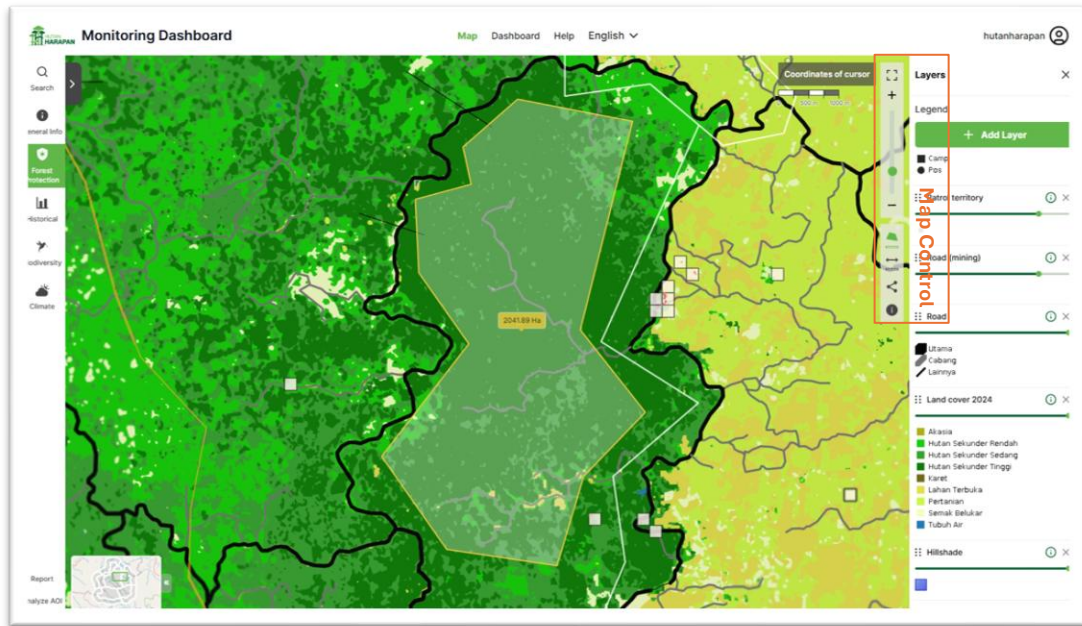


Figure 11. Map control icons on monitoring dashboard.

2. Measure Distance, this tool measures the distance between points
 - a. Click Measure Distance or Line icon to begin.
 - b. Click on the map to set the starting point of your line.

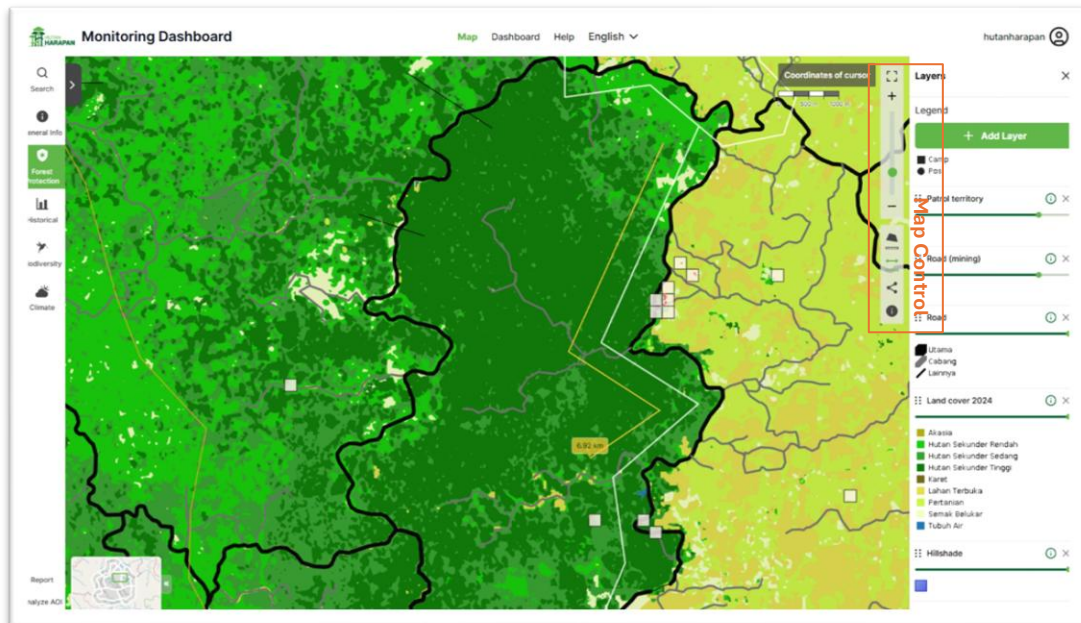


Figure 12. Measuring distance on map control icons on monitoring dashboard.

- c. Continue clicking to create a multi-segment path
 - d. Double clicks on the final point to complete the line. The measured distance will be displayed.
3. View Detail Information
 - a. Click the Information icon in the toolbar.

- b. Click on any concession area on the map.
- c. A pop-up or panel will appear, showing detailed information for the selected area.

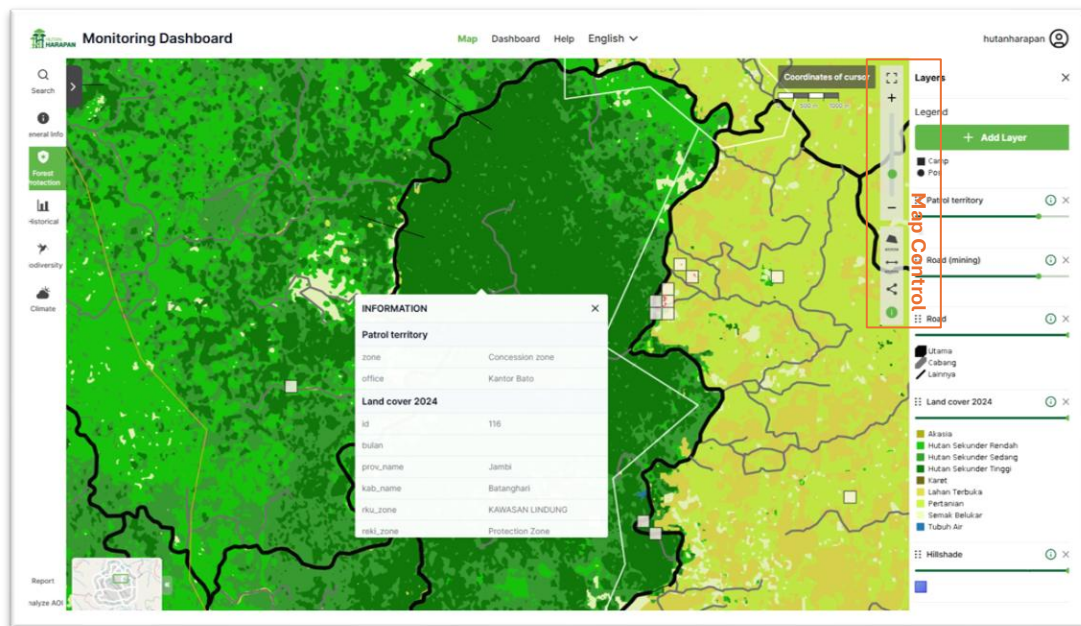


Figure 13. Detail information Map control icons on monitoring dashboard.

Area Search and Selection

Searching for Location

The dashboard provides search functionality quickly find and select areas:

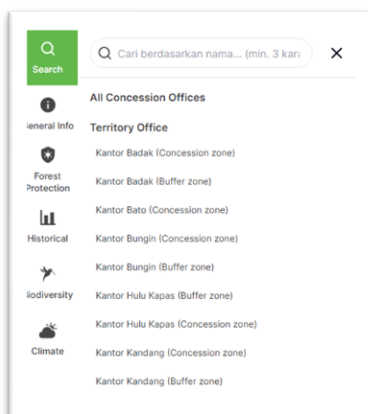


Figure 14. Search menu on monitoring dashboard.

Search Methods

1. Search by Name
 - a. Enter the name of a concession, area, or location into the search bar.
 - b. Search results will dynamically appear as you type.
 - c. Click on a search result to automatically zoom the map to the selected location.

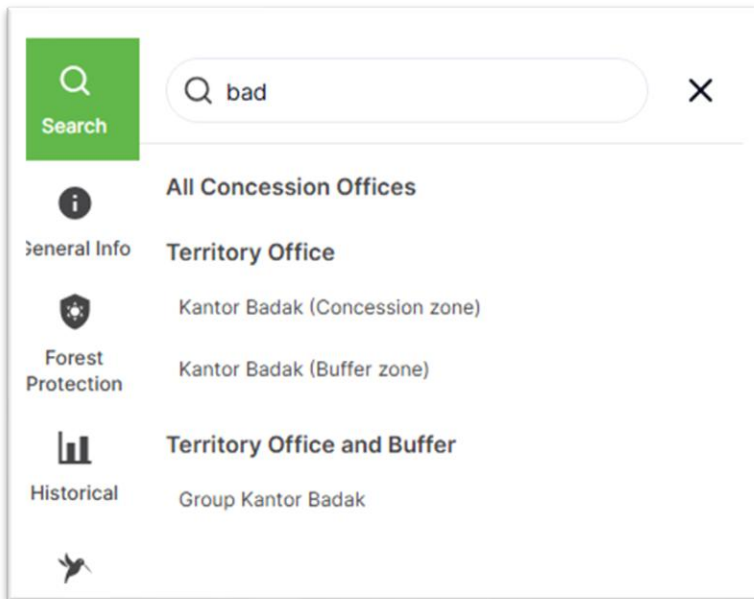


Figure 15. Search results on monitoring dashboard.

2. Select from List

- a. Click the search bar, system will show predefined list.
- b. Click on an item in the list to automatically zoom the map to the selected location.

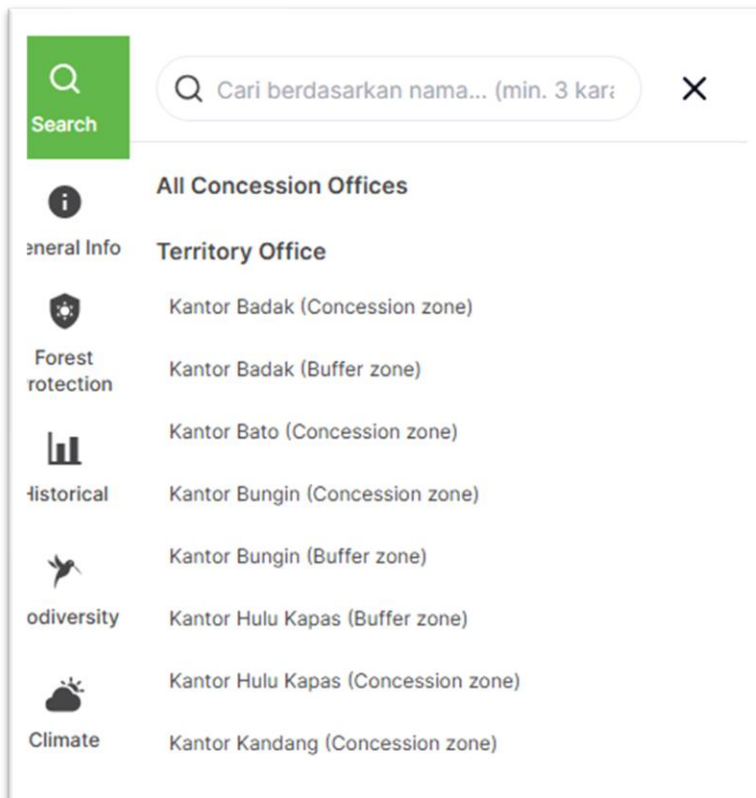


Figure 16. Territory office selection on monitoring dashboard.

Using Search Results

When you select an area map will automatically zoom to the location, area boundary will be highlighted, and analysis data loads in the sidebar.

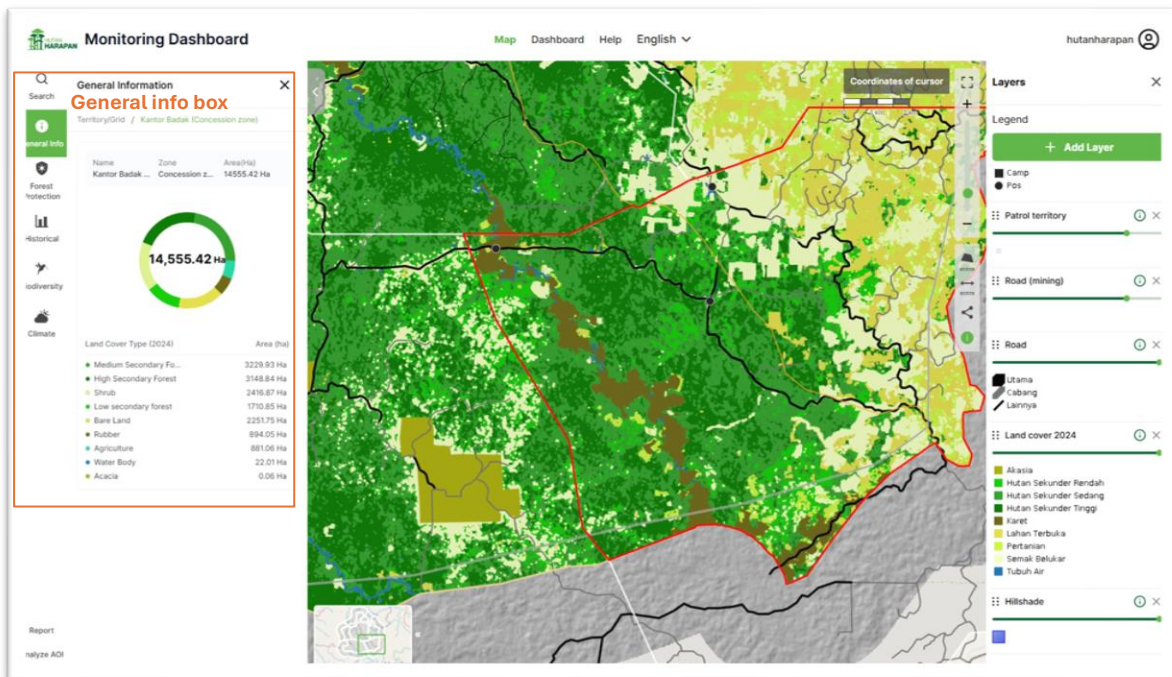


Figure 17. Territory office general information on monitoring dashboard.

Forest Protection Monitoring

Tree Cover Loss Alerts

Tree cover loss alerts are a critical feature for monitoring deforestation, indicating specific areas where forest has been cleared or removed.

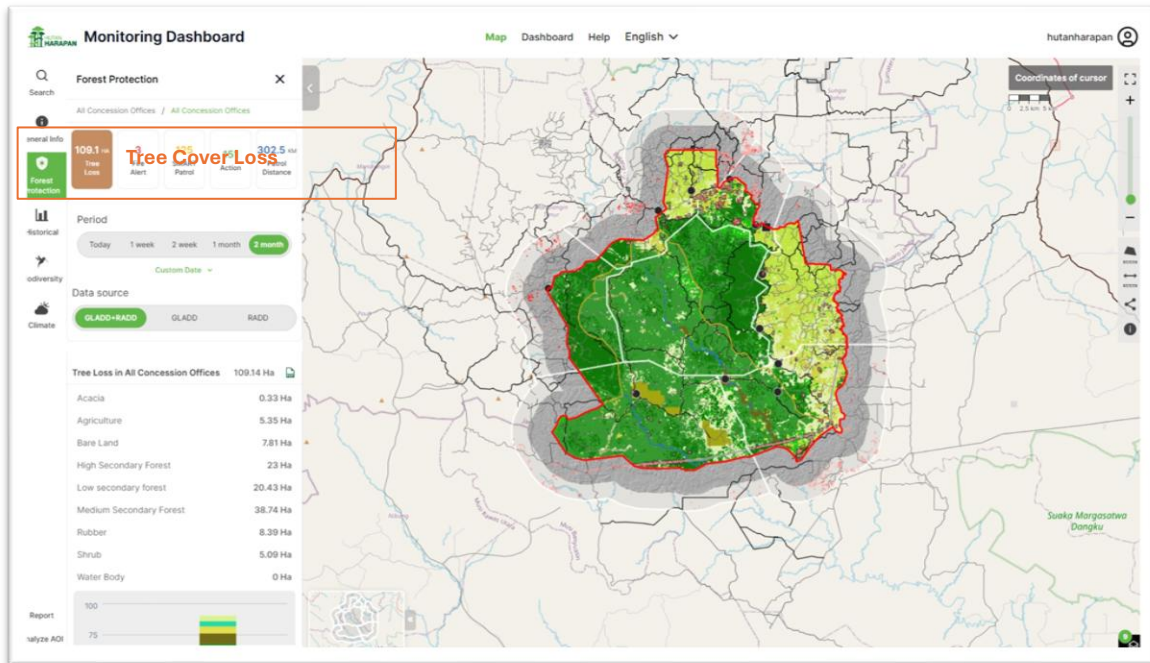


Figure 18. Tree covers lost metric and map on monitoring dashboard.

Key Features:

- Trend Charts**
Visualize the rate and patterns of tree cover loss over selected time periods.
- Map Markers**
Pinpoint the precise geographic locations of deforestation events on the interactive map.
- Summary statistics**
Summarize the total area affected by tree cover loss.

Accessing Tree Cover Loss Alerts

1. Navigate to the sidebar menu and click on "Tree Cover Loss"
2. Upon selection, the side panel will display the Tree Cover Loss Summary. This panel provides an overview of total deforestation within the selected date range, options to choose your data source and a chart visualizing the deforestation trends.

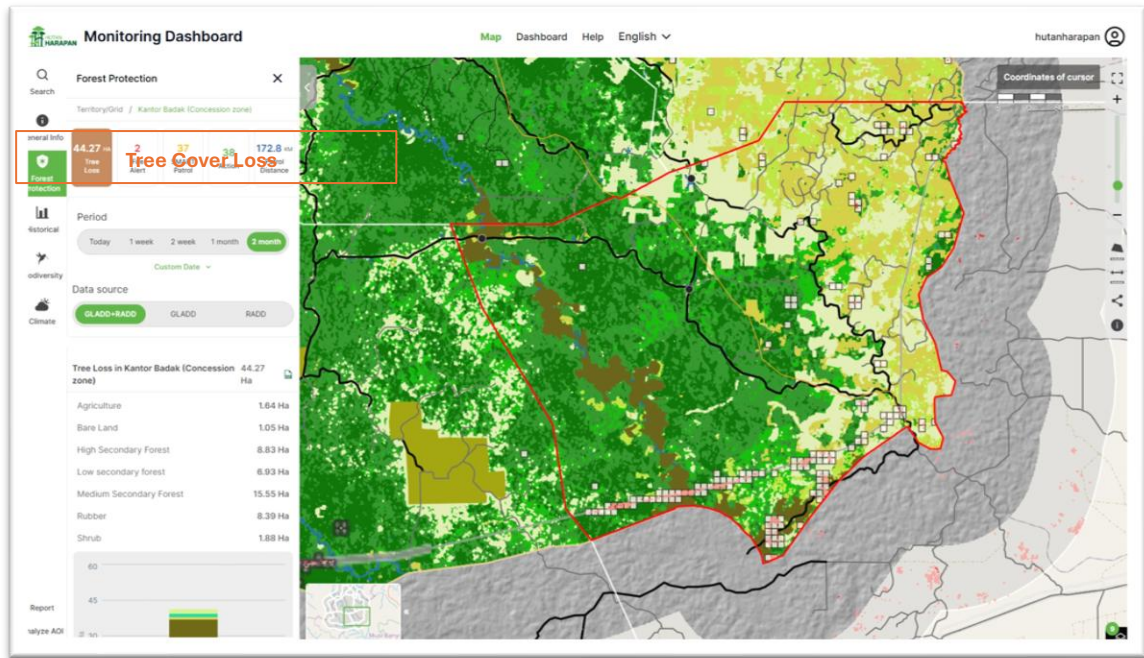


Figure 19. Tree covers lost metric for specific working area on monitoring dashboard.

Filtering Tree Cover Loss Alerts:

To refine your analysis, you can filter the alerts based on several criteria. This allows you to focus on specific timeframes, locations, and datasets.

You can filter alerts by:

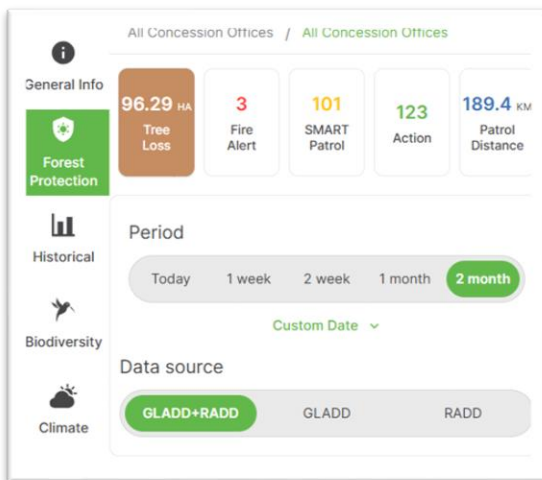


Figure 20. Tree covers lost filters selection.

a. Date Range

Use the calendar to select a custom start and end date, or choose from predefined ranges (e.g., 2 months, 2 weeks).

b. Data Source

Select the satellite monitoring system you wish to use for the data. Options include GLADD, RADD, or a combination of both (GLADD + RADD).

Viewing Tree Cover Loss Alert Details

For in-depth information on a specific event:

1. Click information icon in the toolbar.
2. On the map, click on any tree cover loss marker (red marker).

3. A pop-up will appear, displaying detailed information for that specific alert, such as the date of detection, the size of the affected area, geographic coordinates, and button to download a report.

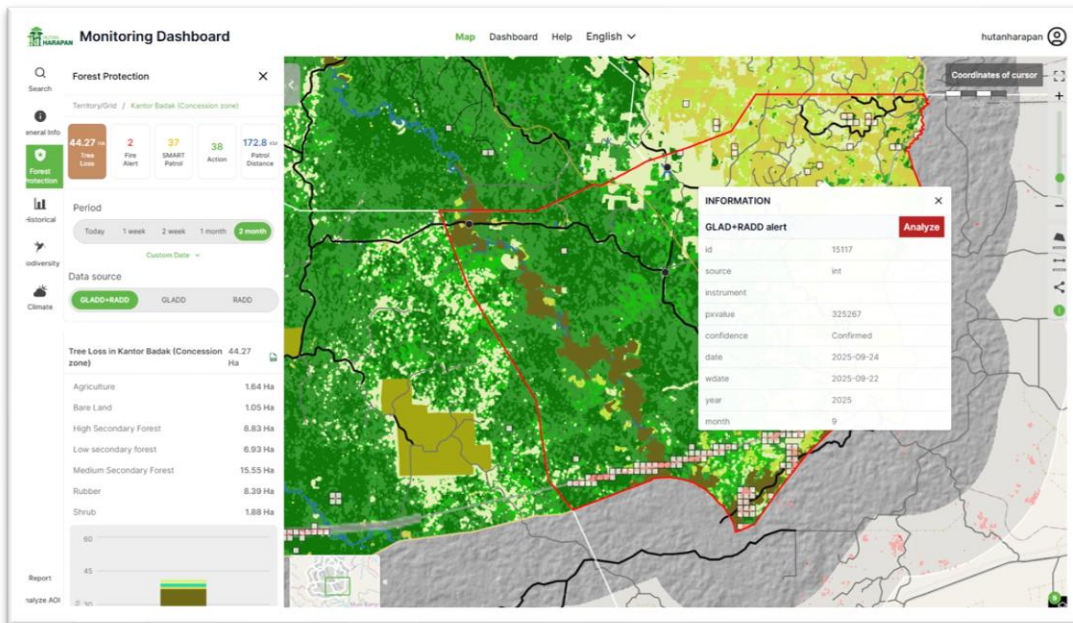


Figure 21. Tree covers lost detail information by selection on monitoring dashboard.

Generating Reports

To obtain a comprehensive report for the selected tree cover loss alert:

1. Within the alert's detailed information pop-up, click the "Report" button.
2. The system will process and generate the report, which will then be automatically sent to the email address associated with user account.

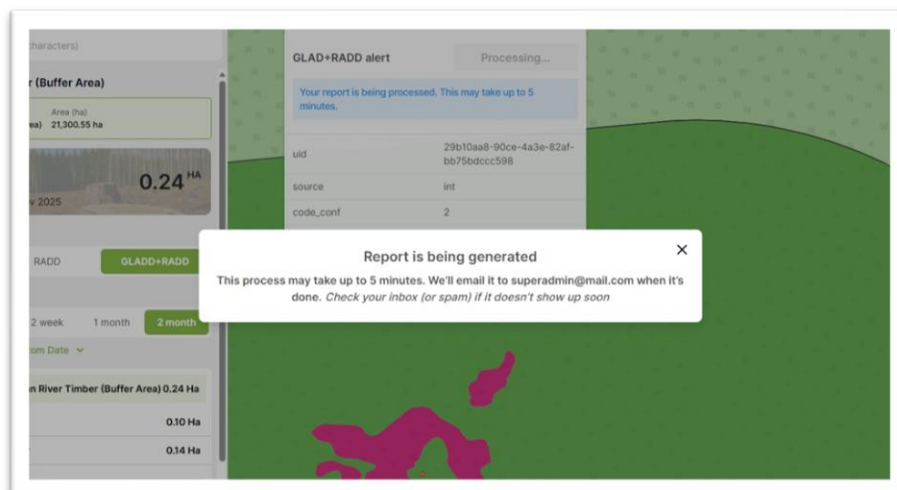


Figure 22. Tree covers lost report generation from selection on monitoring dashboard.

Fire Hotspot Alerts

Fire hotspot alerts identify the locations of fires hotspot detected by satellite, providing timely information to support fire management and response efforts.

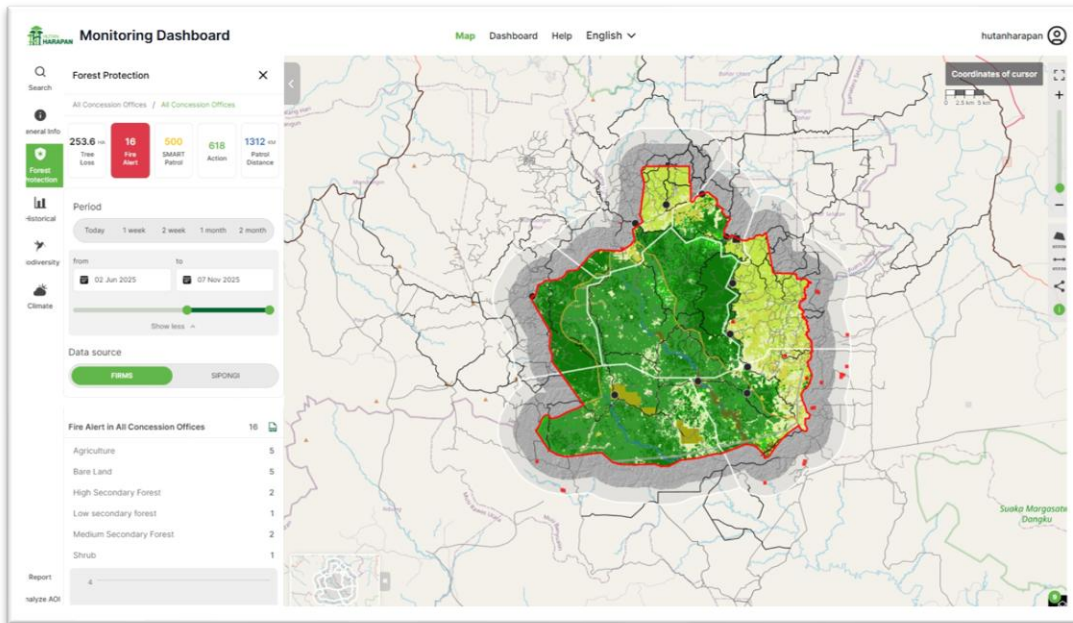


Figure 23. Fire hotspot map on monitoring dashboard.

Accessing Fire Hotspot Alerts

1. Navigate to the sidebar menu and click on “Fire Alerts”.
2. The side panel will display the Alert Summary. This panel provides an overview, including the total alert count, a date range selector, data source options, and a chart visualizing fire alert.

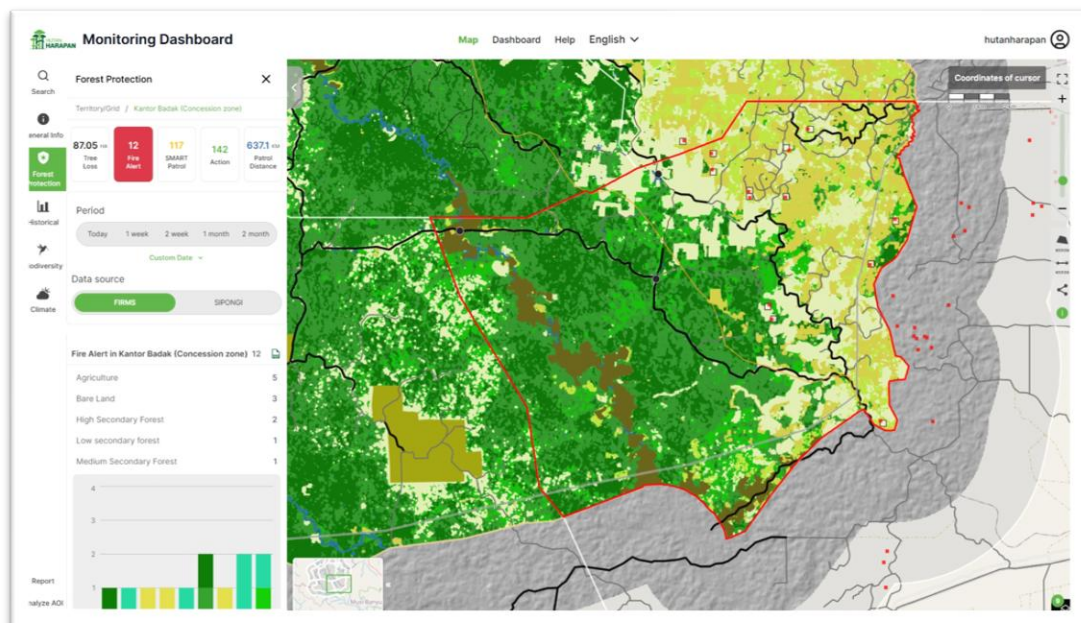
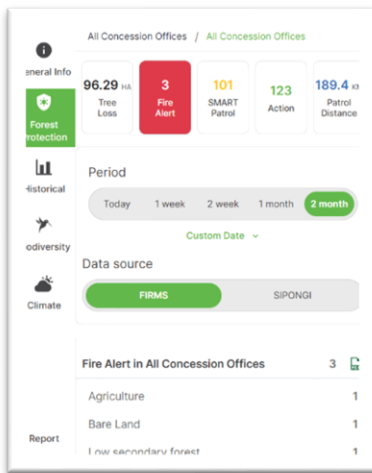


Figure 24. Fire hotspot map for specific area on monitoring dashboard.

Filtering Fire Hotspot Alerts

To focus your analysis on the relevant data, you can filter the alerts based on the following criteria:



a. Date Range

Use the calendar to select a custom start and end date, or choose from predefined ranges (e.g., 2 months, 2 weeks).

b. Data Source

Select the satellite detection system you wish to use for the data. Options include FIRMS or SIPONGI.

Figure 25. Fire hotspot filter option.

Viewing Fire Hotspot Alert Details

You can inspect individual fire alerts directly on the map in two ways:

1. Detailed View

Click information icon in toolbar and click on an alert marker to open a pop-up with detailed information about specific fire event.

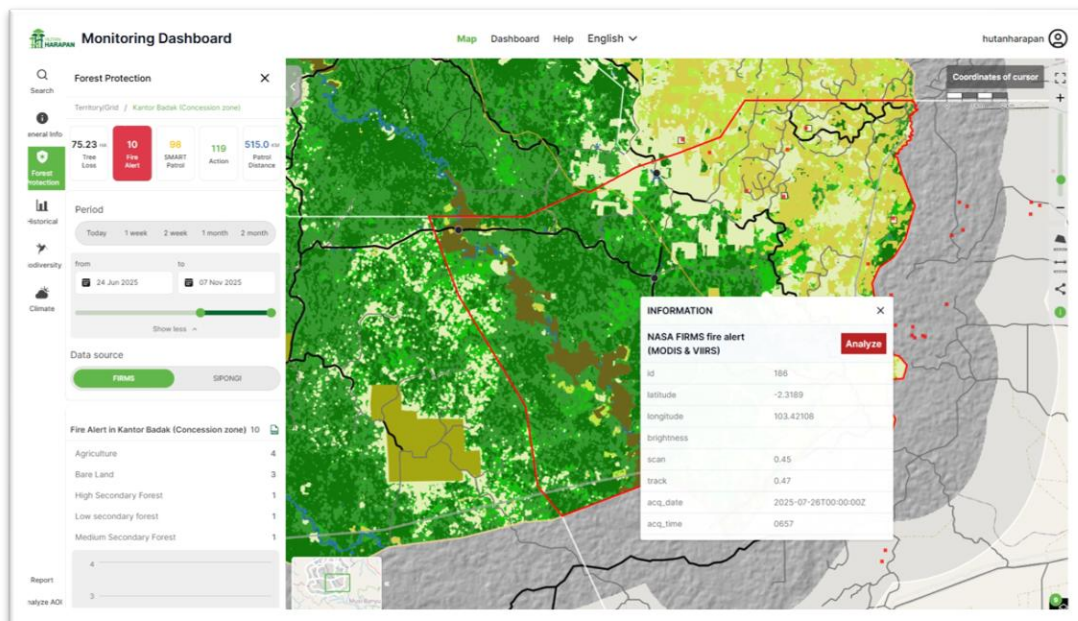


Figure 26. Fire hotspot information detail on map on monitoring dashboard.

Patrolling

Accessing SMART Patrol

This feature allows you to view and analyze patrol activities, routes, and overall coverage.

1. Navigate to the sidebar menu and click on “*Forest Protection*”.
2. Click Patrol on the Field Monitoring section.
3. The sidebar will display the Patrol Summary. This panel provides an overview, including the total patrol count, a date range selector, and a chart visualizing patrol.

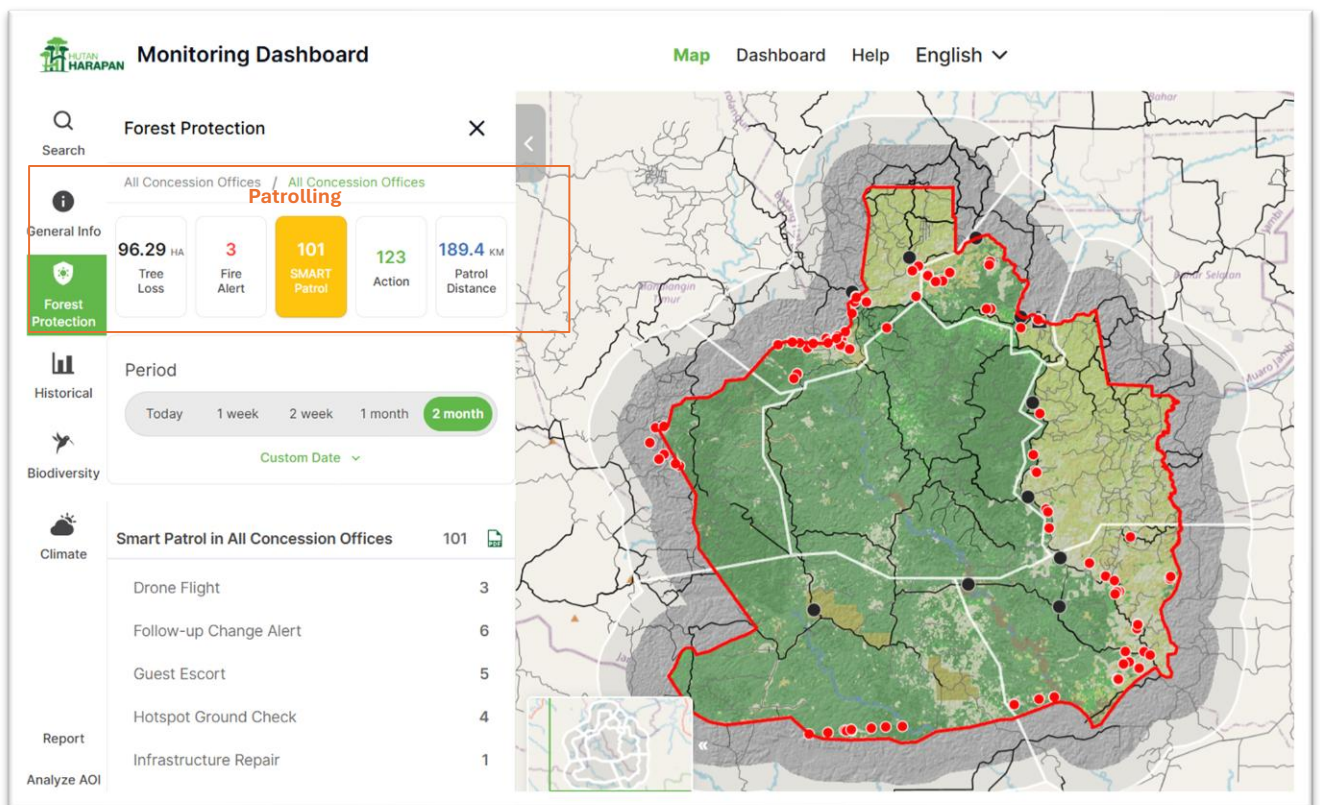
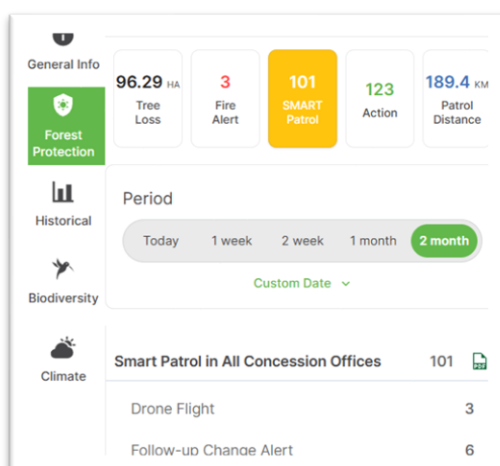


Figure 27. Patrolling status map on monitoring dashboard.

Filtering SMART Patrol



To refine the summary and focus on specific information, you can filter data using date range, use the calendar to select a custom start and end date, or choose from predefined ranges (e.g., 2 months, 2 weeks).

Figure 28. SMART Patrol filter on monitoring dashboard.

Accessing Patrol Action

1. Navigate to the sidebar menu and click on “Action”
2. Upon selection, the side panel will display the Action Summary. This panel provides an overview of total action with action categories within the selected date range, options to choose your data source and a chart visualizing the actions.

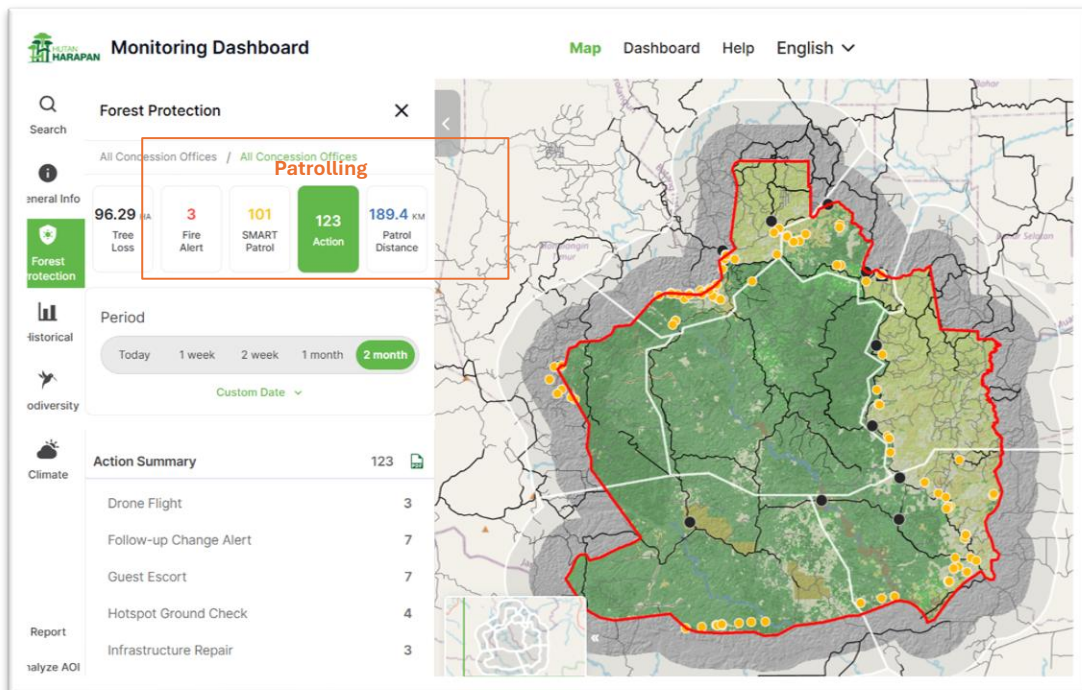


Figure 29. Patrolling in action status map on monitoring dashboard.

Filtering Patrol Actions

To aim your target detail, you can filter the patrol action based on several criteria. This allows you to focus on specific timeframes, locations, and datasets.

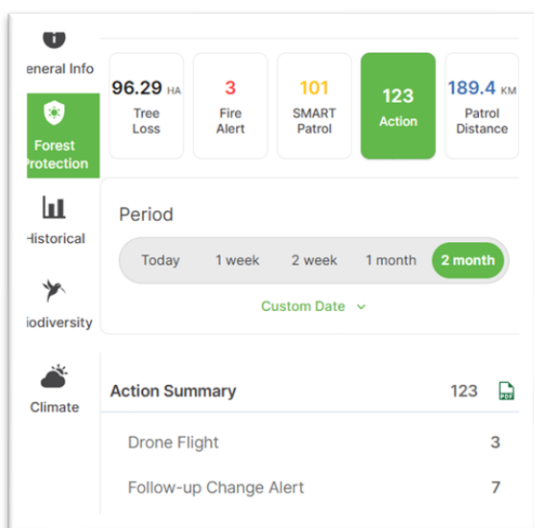


Figure 30. Patrolling in action filter.

Viewing Patrol Action

For in-depth information on a specific event:

1. Click information icon in the toolbar (i)
2. On the map, click on any patrol action marker (yellow marker).
3. A pop-up will appear, displaying detailed information for that specific alert, such as the date of data collection, the size of the affected area, geographic coordinates, and button to download a report.

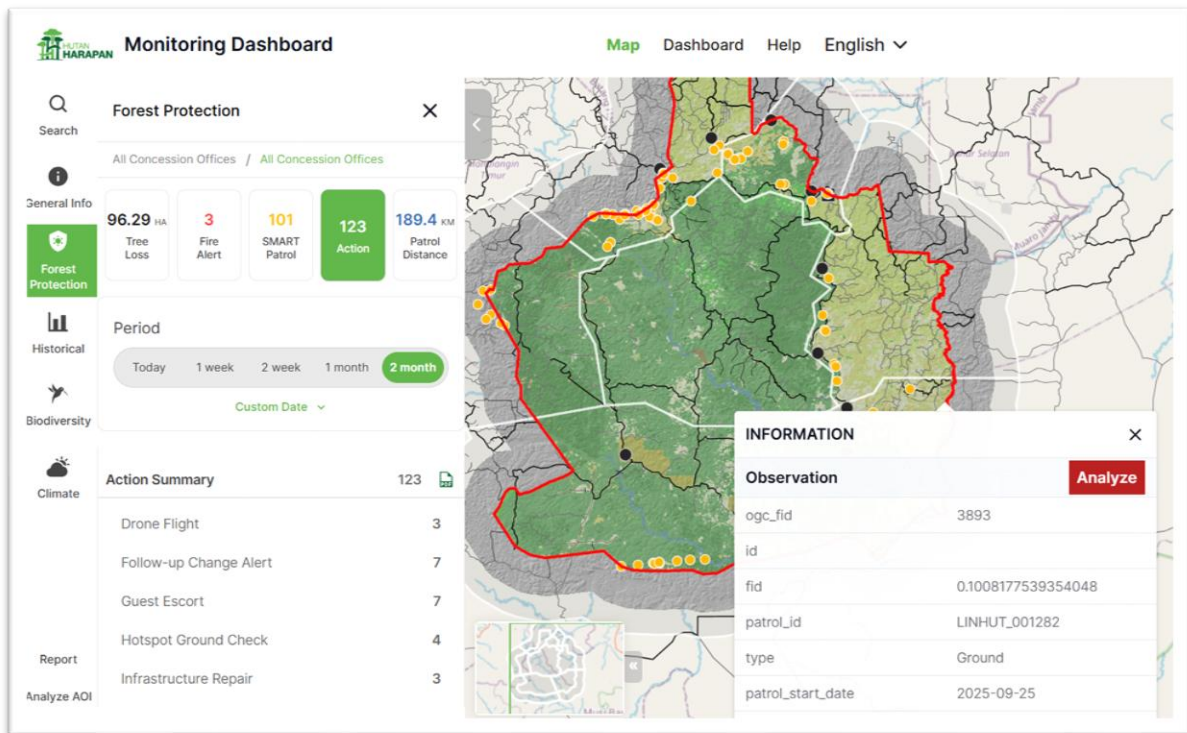


Figure 31. Patrolling in action information detail on monitoring dashboard.

Accessing Patrol Distance

1. Navigate to the sidebar menu and click on "Patrol Distance".
2. Upon selection, the side panel will display the Patrol Distance Summary. This panel provides an overview of total patrol distance with patrol categories within the selected date range, options to choose your data source and a chart visualizing the actions.

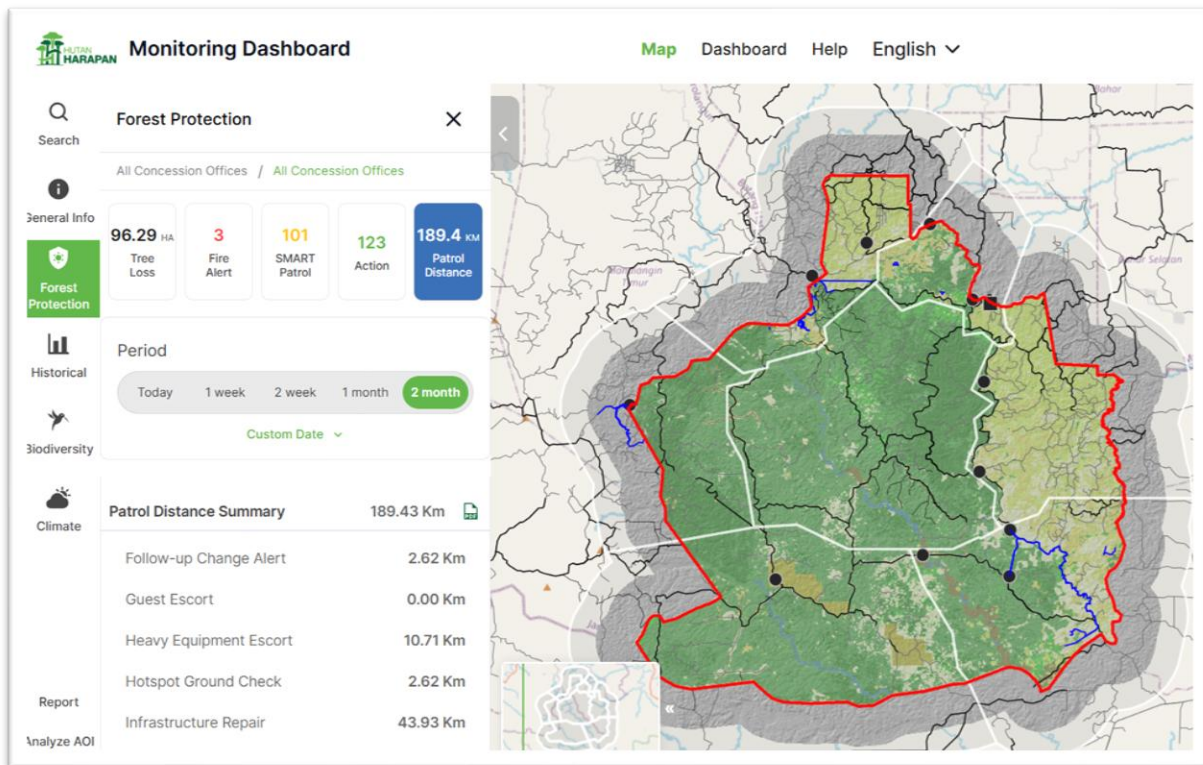


Figure 32. Patrolling distance in kilometer on monitoring dashboard.

Filtering Patrol Distance

To aim your target detail, you can filter the patrol distance based on several criteria. This allows you to focus on specific timeframes, locations, and datasets.

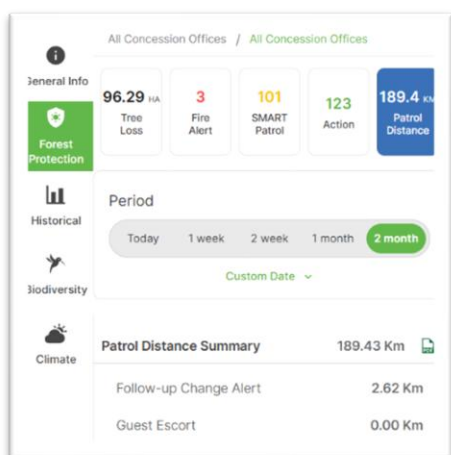


Figure 33. Patrolling distance filter.

Viewing Patrol Distance

For in-depth information on a specific event:

1. Click information icon in the toolbar (i)
2. On the map, click on any patrol action marker (yellow marker).

- A pop-up will appear, displaying detailed information for that specific alert, such as the date of data collection, the size of the affected area, geographic coordinates, and button to download a report.

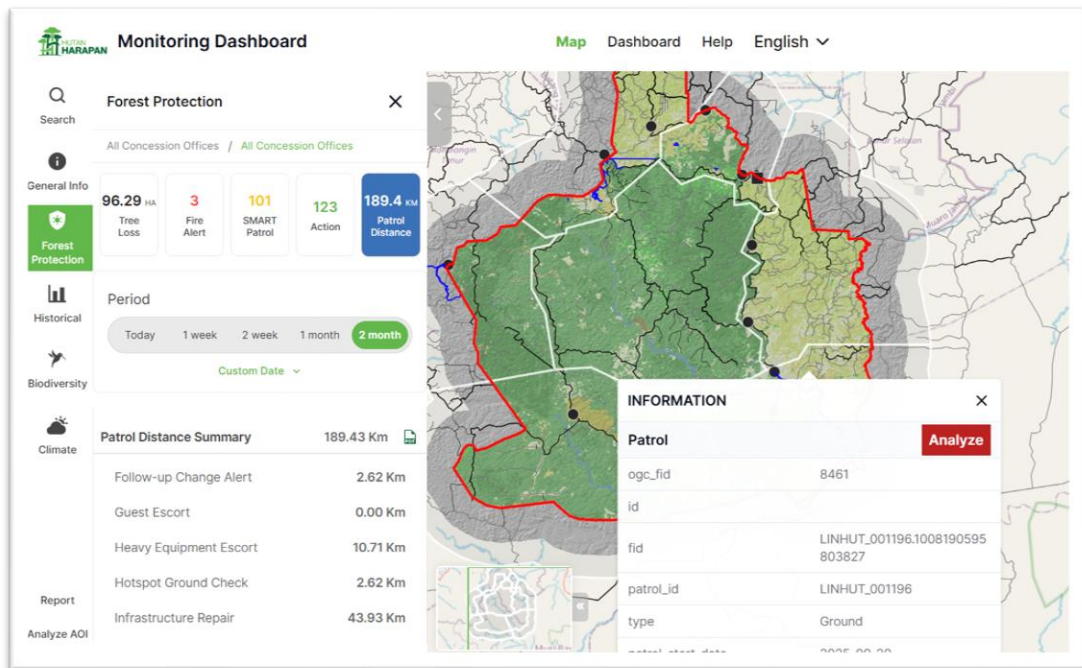


Figure 33. Patrolling distance information detail on monitoring dashboard.

Historical Land Cover

Accessing Historical Land Cover

1. Navigate to the sidebar menu and click on “Historical”
2. Upon selection, the side panel will display the Land Cover Summary. This panel provides an overview of total land cover type within the selected date range, options to choose your data source and a chart visualizing the deforestation trends.

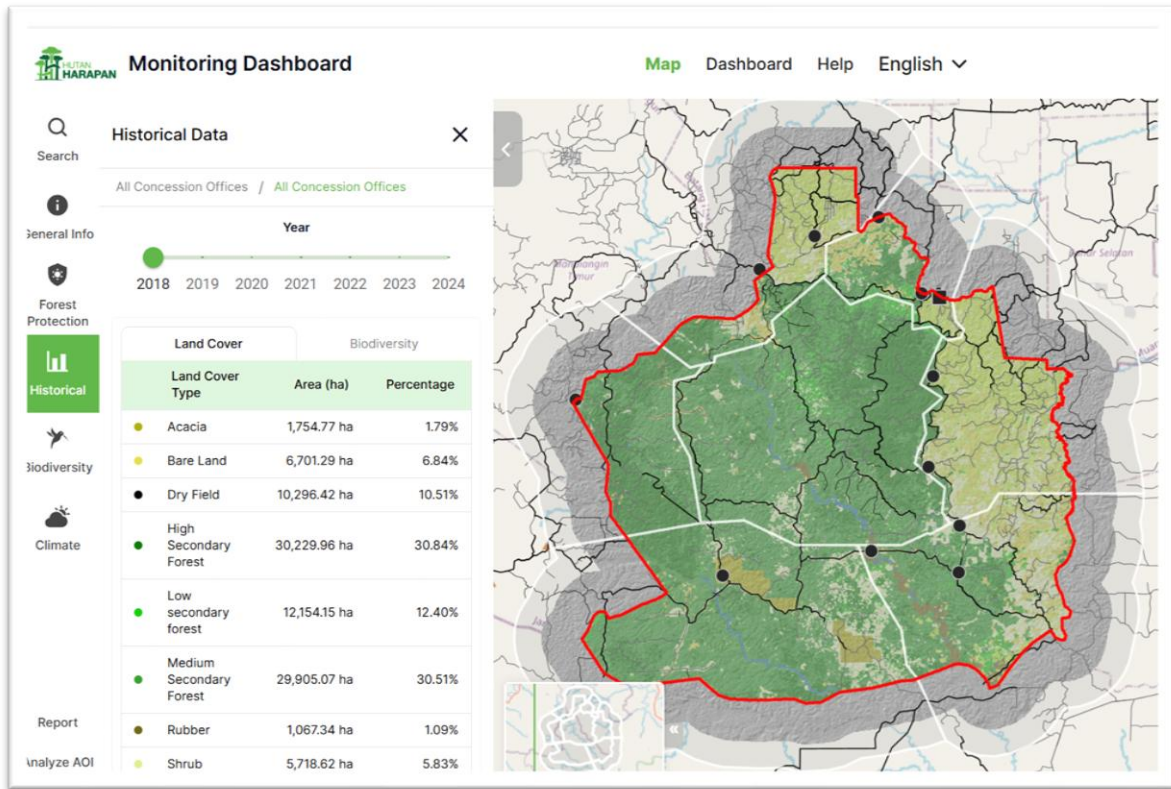


Figure 34. Land cover history over the years on monitoring dashboard.

Biodiversity

Accessing Biodiversity

1. Navigate to the sidebar menu and click on “Biodiversity”
2. Upon selection, the side panel will display the Finding list. This panel provides an overview of total finding by species within the selected date range, options to filter by species name and visualizing the species distribution.

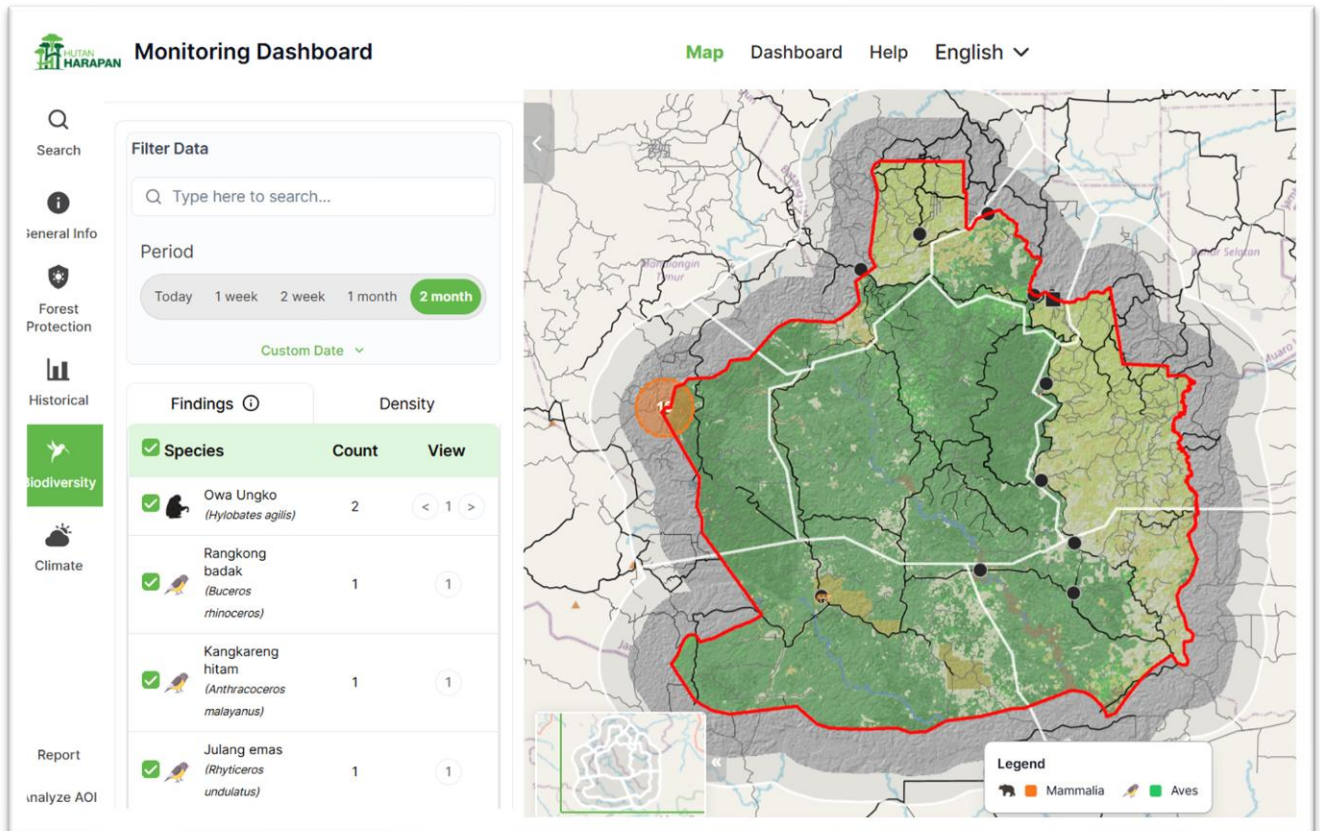


Figure 35. Biodiversity menu and map on monitoring dashboard.

Filtering Biodiversity

To find the species details, you can filter the alerts based on several criteria. This allows you to focus on specific timeframes, locations, and datasets.

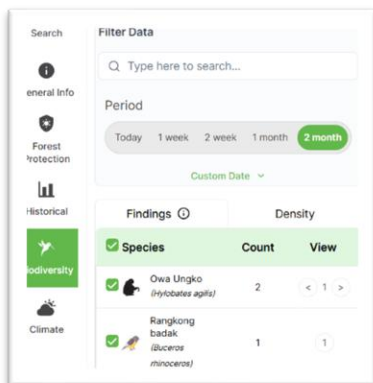


Figure 36. Biodiversity filter function.

Viewing Biodiversity

For detailed information on a specific species:

1. Click information icon in the toolbar.
2. On the map, click on any species marker.
3. A pop-up will appear, displaying detailed information for that specific species, such as the date of finding, the IUCN status, geographic location, and detail of global status.

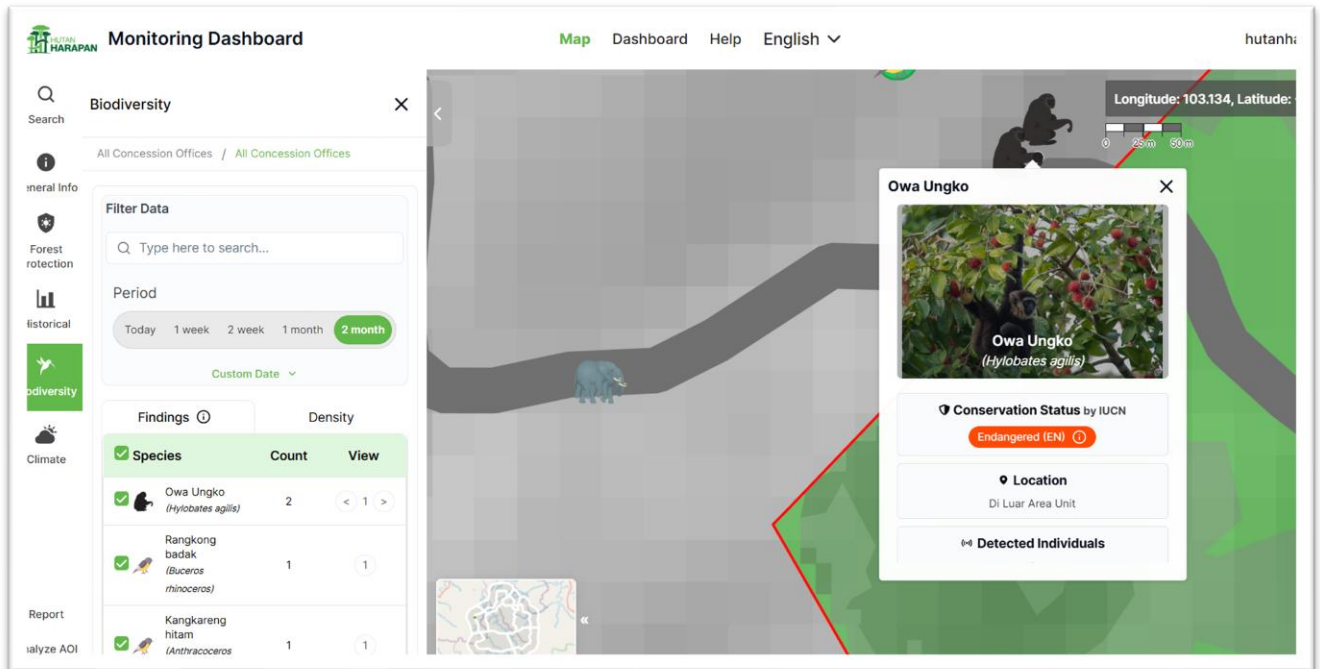


Figure 37. Species detail information of biodiversity section on monitoring dashboard.

Climate

This Climate feature provides access to view, analyze and compare weather and climate information from both forecast and historical data sources.

Climate Data Types and Parameters

Data Types:

1. Forecast Data
Provides weather predictions for the next 5 days.
Data Source: OpenWeather
2. History Data
Provides past weather records for selected time range.
Data Source: OpenWeather

Parameters:

1. Fire Risk – Fire weather index and risk levels.
2. Temperature – Air temperature forecast and history.
3. Rain – Precipitation and rainfall probability.
4. Humidity – Air humidity levels.
5. Wind – Wind speed and direction.

Accessing Climate Forecast Data

Steps:

1. Navigate to the sidebar menu and click on “Climate”.
2. Choose location or concession from search bar.
3. The side panel will display visualization of climate data.

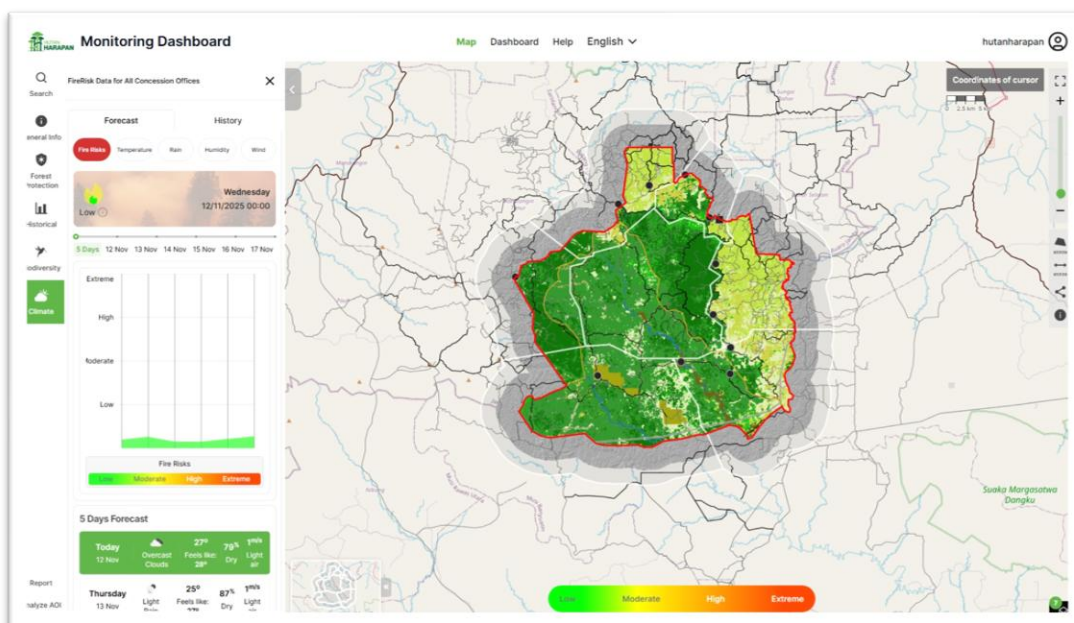


Figure 38. Climate information on monitoring dashboard.

Filtering Climate Forecast Data

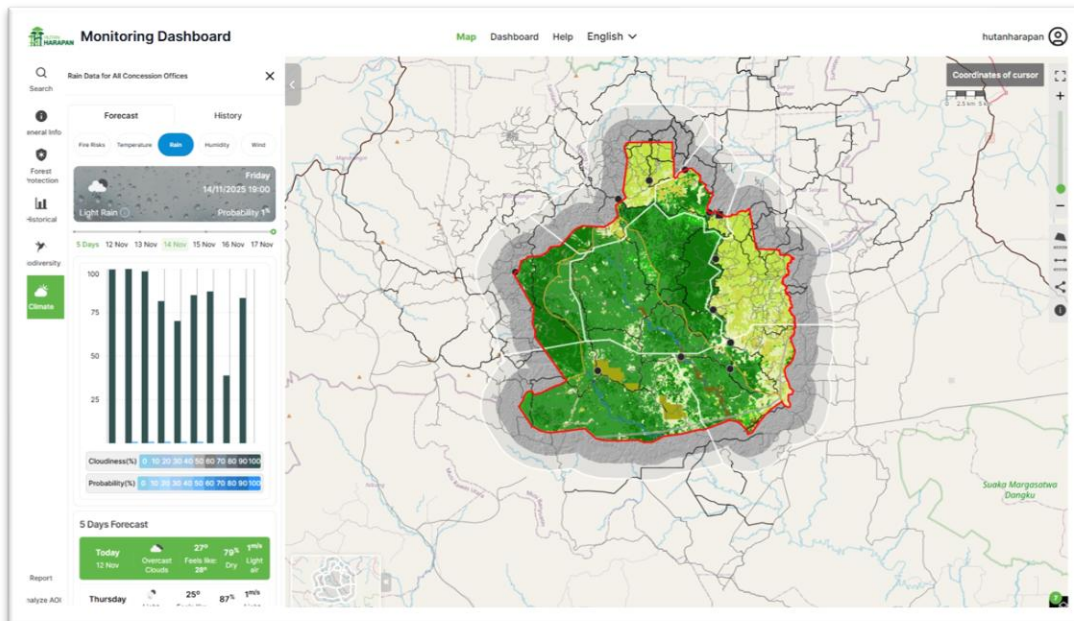


Figure 39. Climate filter of daily forecast rain on monitoring dashboard.

Steps:

1. In the “Forecast” tab.
2. Select parameter provided in side panel to view climate data.
3. Click the date from the date range slider to view specific climate data.

Accessing Climate History Data

Steps:

1. Navigate to the sidebar menu and click on “Climate”
2. Select tab “History”
3. Choose location or concession from search bar.
4. Choose the “Data Source”
5. The side panel will display visualization of climate data.

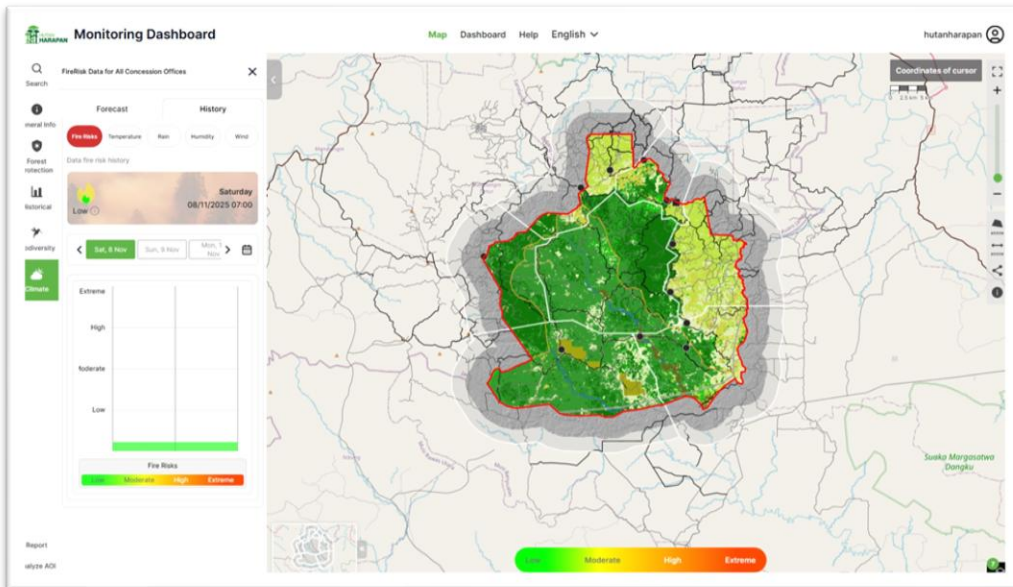


Figure 40. Climate history of fire risk on monitoring dashboard.

Filtering Climate History Data

Steps:

1. In the “History” tab.
2. Select parameter provided in side panel to view climate data.
3. Adjust the date range from the date range slider to view specific climate data.

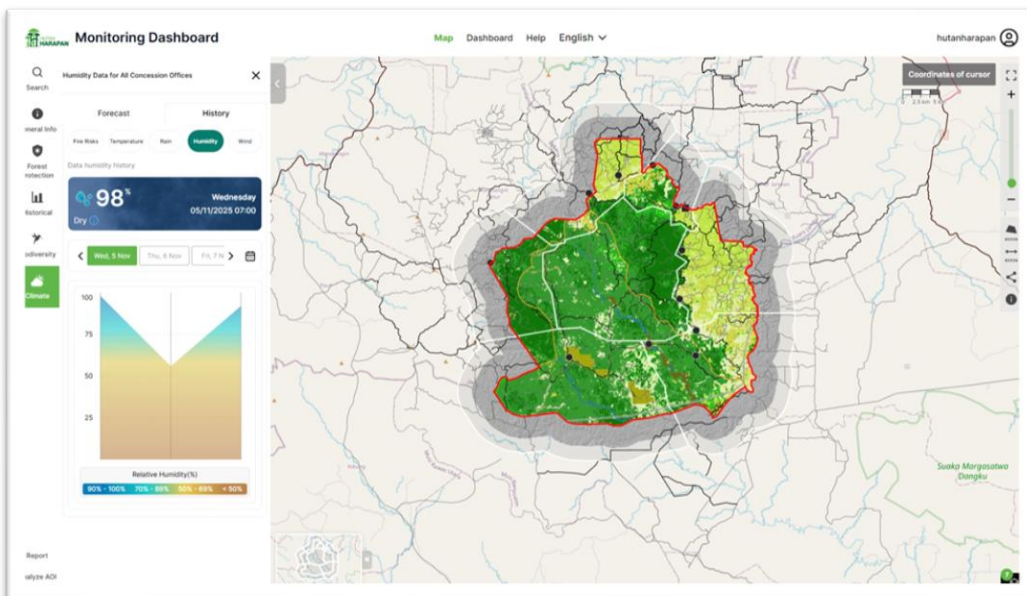


Figure 41. Climate history filter button of humidity on monitoring dashboard.

Satellite Imagery

This feature allows users to view and analyze high-resolution satellite images for environmental and land cover monitoring. This feature provides access to recent and historical satellite images from multiple global sources.



Figure 42. Explore the concession with high resolution imagery data from satellite on monitoring dashboard.

Available Satellite Sources

1. ESRI Basemap – Reference basemap for visual context and comparison.
2. Sentinel 2 – Medium-resolution imagery from ESA Copernicus satellites.
3. Landsat – Long-term Earth observation imagery from NASA/USGS.
4. Sentinel 1 - Medium-resolution imagery from ESA Copernicus satellites.
5. Google Imagery – High resolution imagery from Airbus
6. NDVI/NDWI and NBDI – composite image base on Vegetation Index (NDVI), Water Index (NDWI) and Building Index (NBDI).

Tips: Different sources may vary in update frequency and cloud coverage.

Viewing Satellite Imagery

View and explore satellite images over specific areas and time periods.

Steps:

1. Open Legends Panel.
2. Click “Add Layers”.

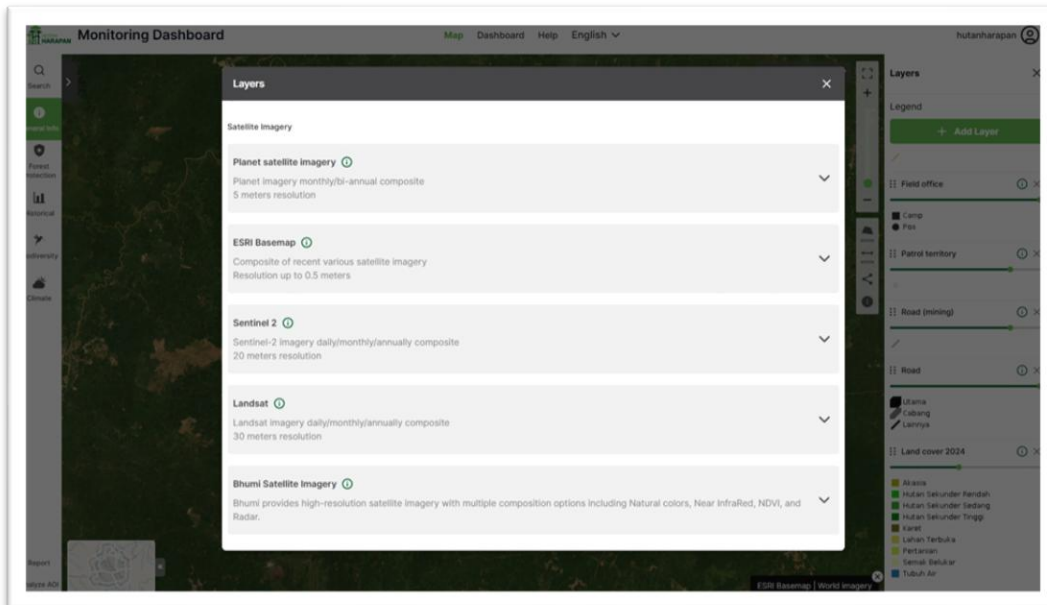


Figure 43. List of available satellite imagery collection layers on monitoring dashboard.

3. In section “Satellite Imagery”, select a satellite source (e.g., ESRI Basemap, Sentinel 2, or Landsat).

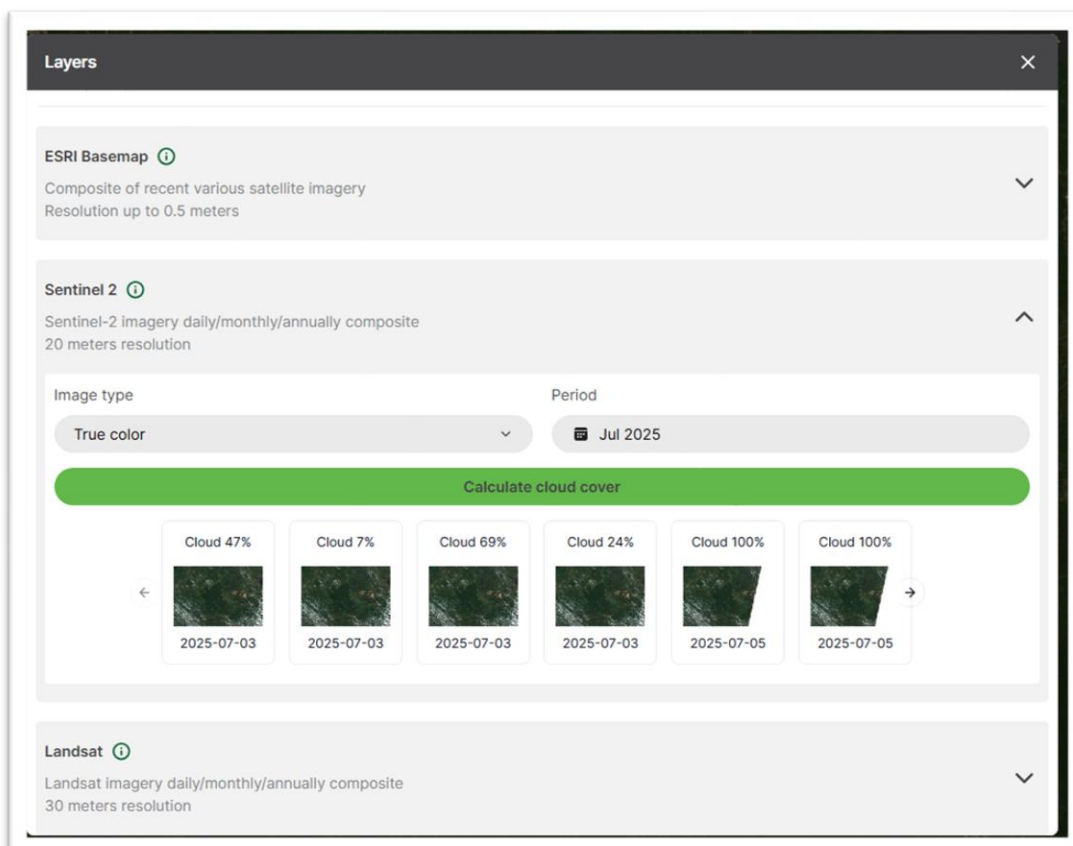


Figure 44. Selection of available satellite imagery collection layers based on cloud cover in percent on monitoring dashboard.

Viewing NDVI Satellite Imagery

View and explore satellite images over specific areas and time periods.

Steps:

1. Open Legends Panel.
2. Click “Add Layers”.

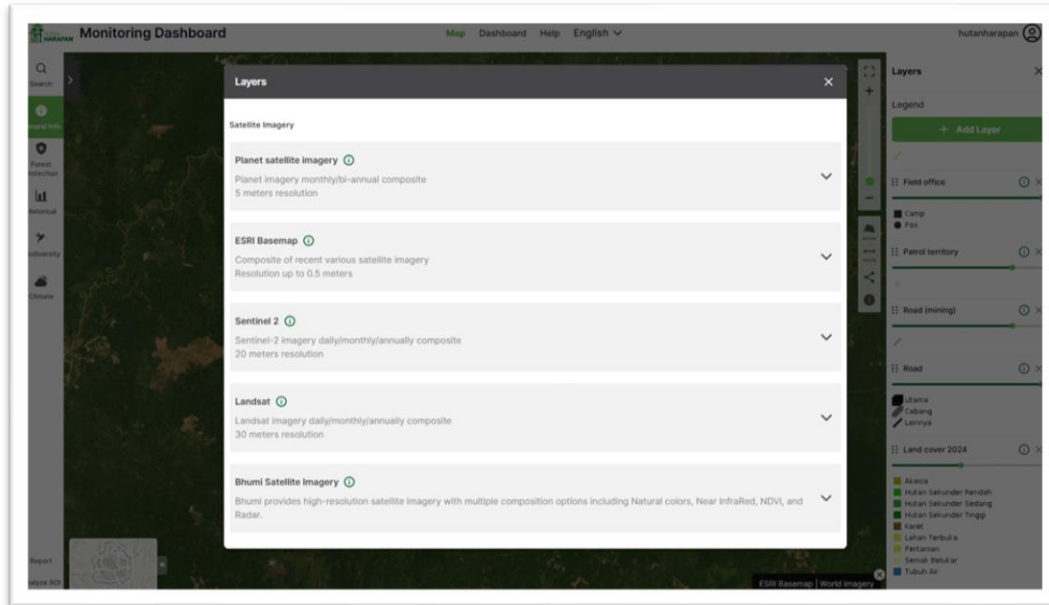


Figure 45. List of available satellite imagery collection layers on monitoring dashboard.

3. In section “Satellite Imagery”, select a satellite source (e.g., ESRI Basemap, Sentinel 2, or Landsat).

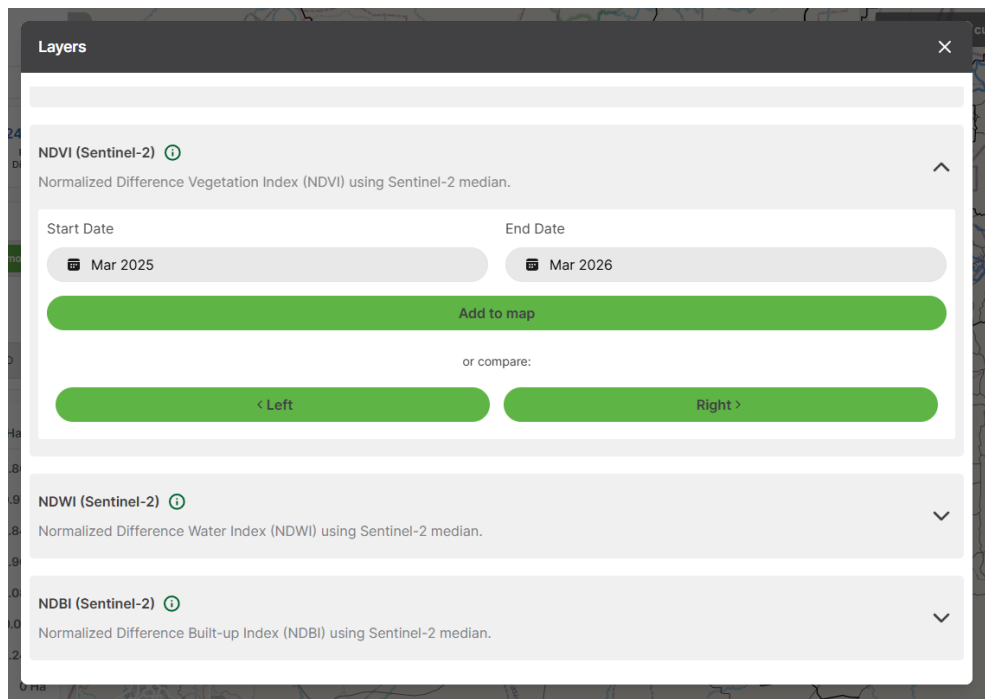


Figure 46. Selection of NDVI collection layers based on composite period on monitoring dashboard.

4. For NDVI, select image preferred period cover, one year period is default.
 - a. Click following option with different target view:
 - Click **Add to map** to show full screen map.
 - Click **Right** to show half screen map on the right side.
 - Click **Left** to show half screen map on the right side.
 - b. Click one of the above options to show the result.
5. Click “Add to map”.

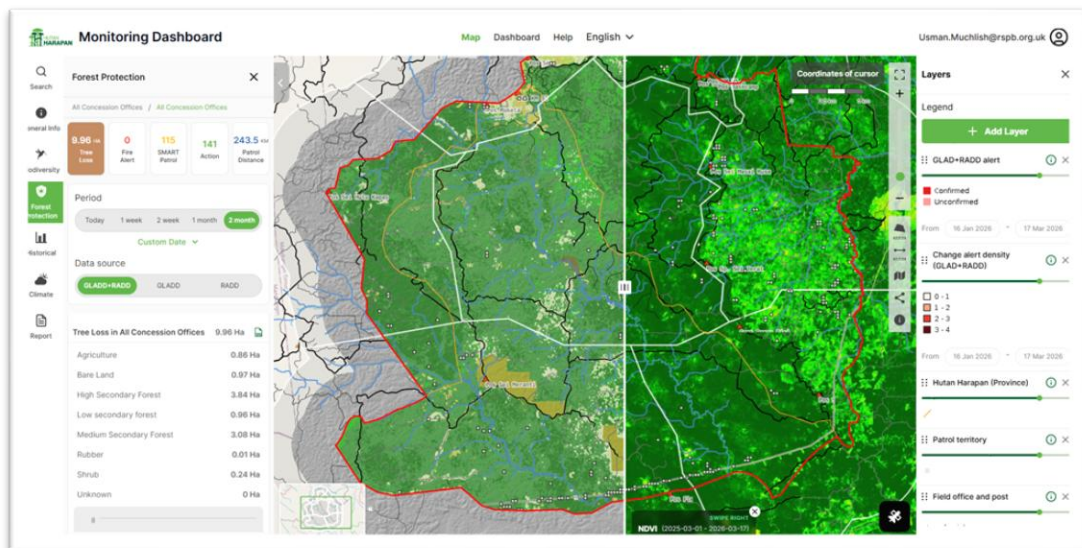


Figure 47. NDVI satellite imagery layers on monitoring dashboard.

Advanced Viewing Satellite Imagery

View and explore from both satellite images over specific areas and time periods.

Steps:

1. Open Legends Panel.
2. Click “Add Layers”.
3. In section “Satellite Imagery”, select a satellite source (e.g., ESRI Basemap, Sentinel 2, or Landsat).
4. Select Left button in compare section.
5. Select another satellite imagery.
6. Click Right button in compare section.
7. Close Layers pop up.

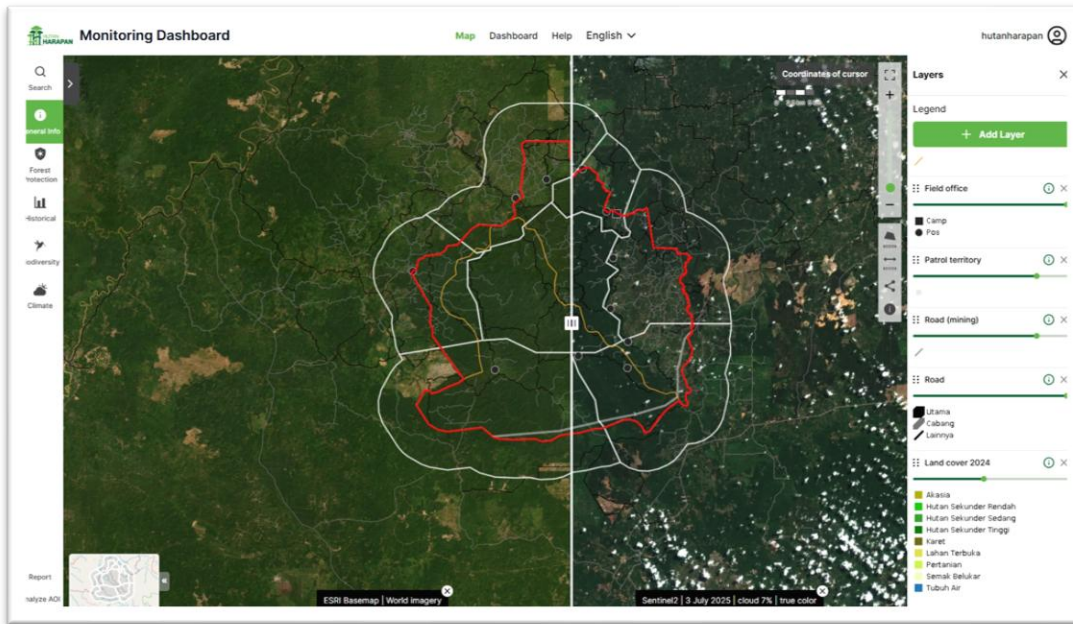
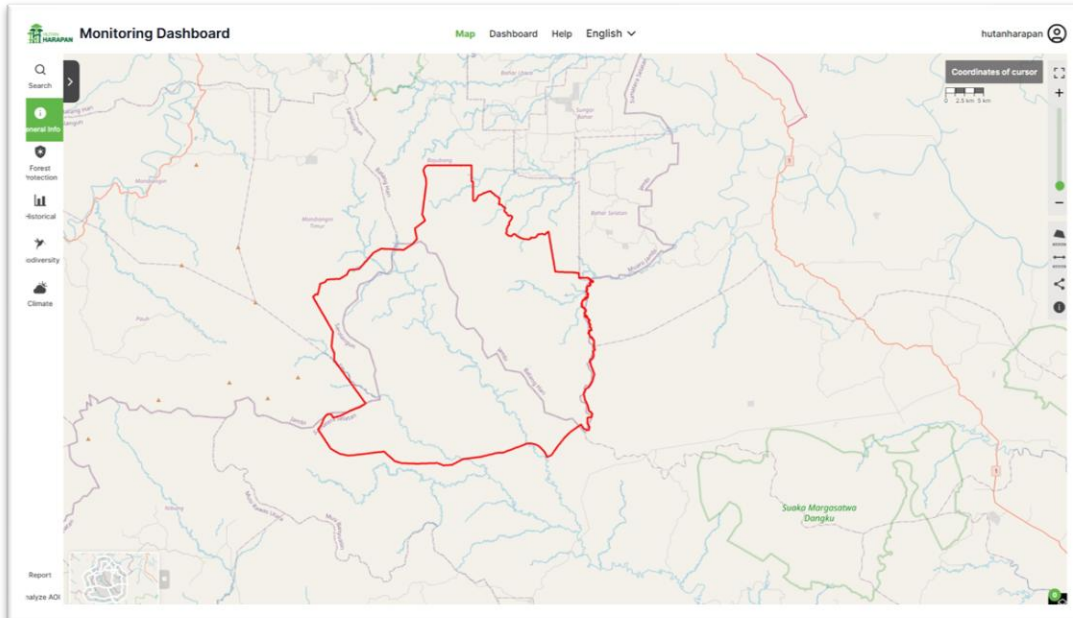


Figure 48. Explore satellite imagery comparison layers side-by-side on monitoring dashboard.

Troubleshooting

Common Issues and Solutions

Issue 1: Map Not Loading



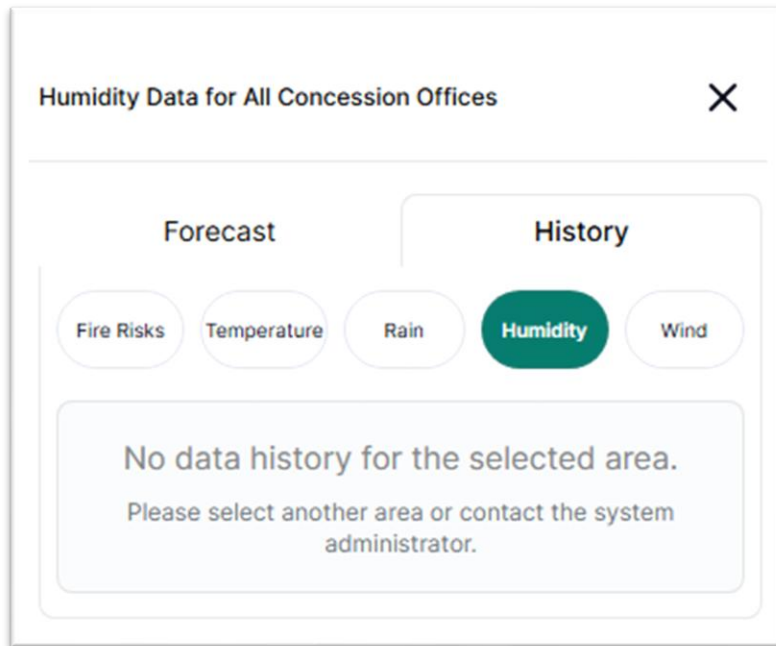
Symptoms:

- a. Blank map area

Solutions:

1. Check internet connection
Verify you have stable internet connection and try refreshing the page.
2. Clear browser cache
Clear cached images and files and try refreshing the page.
3. Try different browsers
Switch to Chrome or Firefox, and clear cache in new browser.

Issue 2: Data Not Updating



Symptoms:

- a. Old data displayed
- b. Charts not refreshing
- c. “No data” message

Solutions:

1. Refresh the page
Press F5 to reload or click refresh button.
2. Reselect area
Reselect concession area from search bar.
3. Check data range
Verify date range is correct and adjusted if needed.

Issues 3: Report Generation Fails

Symptoms:

- Report status stuck on “Processing”.
- Error message when generating report.
- *Report downloads fail.*

Solutions:

1. Check report status
Wait a few minutes and check if status changes.
2. Verify alert section
Ensure alert is properly selected and try selecting different alerts.

Issue 4: Slow Performance

Symptoms:

- Dashboard loads slowly
- Interaction is laggy
- Charts take long to render

Solutions:

1. Reduce active layers
Turn off unnecessary map layers and limit number of overlays.
2. Select smaller areas
Large areas take longer to process, select specific concession area instead.
3. Close another browser tab
Free up browser memory, and close unnecessary applications.
4. Check browser performance
Close and reopen browser, and restart computer if needed.

Glossary

Term	Definition
Alert	A notification indicating a detected event (fire, and deforestation)
Concession	A specific forest area or administrative unit
Layer	A data overlay on the map (alerts, boundaries, imagery)
Patrol	Field activities for forest protection

Appendices

Appendix A: Supported Browsers

Browser	Minimum Version	Recommended
Chrome	90+	Latest
Firefox	88+	Latest
Edge	90+	Latest
Safari	14+	Latest

Appendix B: System Requirements

Minimum Requirements:

Internet connection: 5 Mbps

Screen resolution: 1366x768

Recommended:

Internet connection: 15 Mbps

Screen resolution: 1366x768

Appendix C: Data Update Schedule

Data Type	Update Frequency
Fire Alerts	Daily
Climate Forecast	Every 6 hours
Climate History	Every 6 hours
Tree Cover Loss	Daily
Patrol Data	Every 3 hours